

Recombinant Mouse IL15RA/CD215 Protein (Fc Tag)

Catalog Number: PKSM041053

Note: Centrifuge before opening to ensure complete recovery of vial contents.

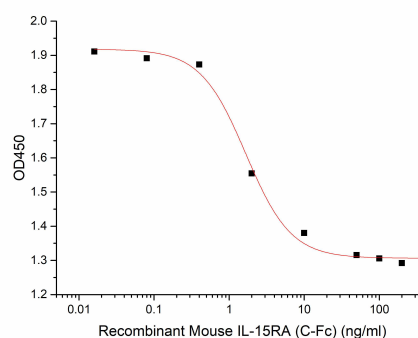
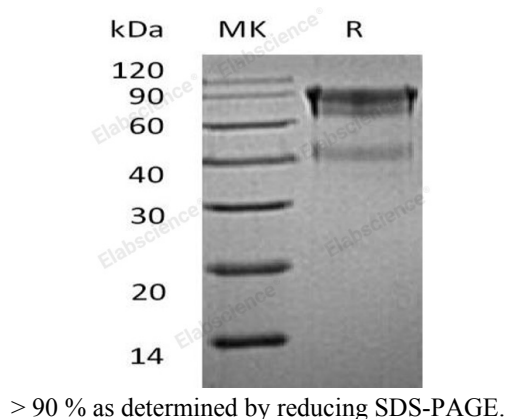
Description

Species	Mouse
Source	HEK293 Cells-derived Mouse IL15RA/CD215 protein Gly33-Lys205 , with an C-terminal Fc
Calculated MW	45.5 kDa
Observed MW	60-90 kDa
Accession	Q60819
Bio-activity	Measured by its ability to block human IL-15-induced proliferation of CTLL- 2 mouse cytotoxic T cells. The ED ₅₀ for this effect is 0.5-2 ng/ml.

Properties

Purity	> 90 % as determined by reducing SDS-PAGE.
Endotoxin	< 1.0 EU per µg of the protein as determined by the LAL method.
Storage	Generally, lyophilized proteins are stable for up to 12 months when stored at -20 to -80 °C. Reconstituted protein solution can be stored at 4-8°C for 2-7 days. Aliquots of reconstituted samples are stable at < -20°C for 3 months.
Shipping	This product is provided as lyophilized powder which is shipped with ice packs.
Formulation	Lyophilized from a 0.2 µm filtered solution of 20mM PB, 150mM NaCl, pH 7.4. Normally 5% - 8% trehalose, mannitol and 0.01% Tween 80 are added as protectants before lyophilization.
Reconstitution	Please refer to the specific buffer information in the printed manual.
	Please refer to the printed manual for detailed information.

Data



Measured by its ability to block human IL-15-induced proliferation of CTLL- 2 mouse cytotoxic T cells. The ED₅₀ for this effect is 0.5-2 ng/ml.

Background

Mouse interleukin-15 receptor subunit alpha, also known as IL15ra, is a high-affinity receptor for interleukin-15. IL15ra associates as a heterotrimer with the IL-2 receptor beta and gamma subunits (Common gamma chain, or gamma c) to initiate signal transduction. It can signal both in cis and trans where IL15R from one subset of cells presents IL15 to neighboring IL2RG-expressing cells. IL15ra is expressed in special cells including a wide variety of T and B cells and non-lymphoid cells. Human IL15ra shares 45% amino acid sequence homology with the mouse form of the receptor. Eight isoforms of IL-15 R alpha mRNA have been identified, resulting from alternative splicing events involving different exons.