

## ATG7 Polyclonal Antibody

**catalog number: E-AB-70288**

**Note:** Centrifuge before opening to ensure complete recovery of vial contents.

### Description

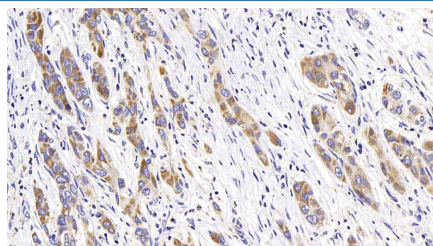
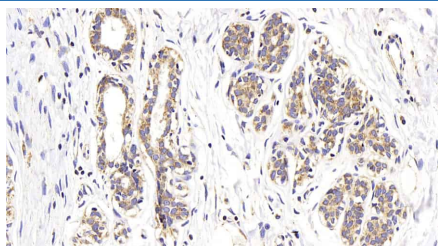
<b>Reactivity</b>	Human
<b>Immunogen</b>	KLH conjugated Synthetic peptide corresponding to mouse ATG7
<b>Host</b>	Rabbit
<b>Isotype</b>	IgG
<b>Purification</b>	Affinity purification
<b>Buffer</b>	Phosphate buffered solution, pH 7.4, containing 0.05% stabilizer, 1% protein protectant and 50% glycerol.

### Applications

### Recommended Dilution

<b>IHC</b>	1:200-1:800
------------	-------------

### Data



Immunohistochemistry analysis of paraffin-embedded human breast cancer using ATG7 Polyclonal Antibody at dilution of 1:400. Immunohistochemistry analysis of paraffin-embedded human liver cancer using ATG7 Polyclonal Antibody at dilution of 1:400.

### Preparation & Storage

<b>Storage</b>	Store at -20°C Valid for 12 months. Avoid freeze / thaw cycles.
<b>Shipping</b>	The product is shipped with ice pack, upon receipt, store it immediately at the temperature recommended.

### Background

ATG7 (Autophagy Related 7) is a Protein Coding gene. Among its related pathways are Autophagy Pathway and Innate Immune System. GO annotations related to this gene include protein homodimerization activity and ubiquitin activating enzyme activity. This gene encodes an E1-like activating enzyme that is essential for autophagy and cytoplasmic to vacuole transport. The encoded protein is also thought to modulate p53-dependent cell cycle pathways during prolonged metabolic stress. It has been associated with multiple functions, including axon membrane trafficking, axonal homeostasis, mitophagy, adipose differentiation, and hematopoietic stem cell maintenance. Alternative splicing results in multiple transcript variants.

### For Research Use Only