

# Recombinant Human S100A7/PSOR1 protein (His Tag)

Catalog Number: PDEH100929



**Note:** Centrifuge before opening to ensure complete recovery of vial contents.

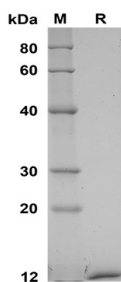
## Description

<b>Species</b>	Human
<b>Mol_Mass</b>	10.9 kDa
<b>Accession</b>	P31151
<b>Bio-activity</b>	Not validated for activity

## Properties

<b>Purity</b>	> 95% as determined by reducing SDS-PAGE.
<b>Endotoxin</b>	< 10 EU/mg of the protein as determined by the LAL method
<b>Storage</b>	Generally, lyophilized proteins are stable for up to 12 months when stored at -20 to -80 °C. Reconstituted protein solution can be stored at 4-8°C for 2-7 days. Aliquots of reconstituted samples are stable at < -20°C for 3 months.
<b>Shipping</b>	This product is provided as lyophilized powder which is shipped with ice packs.
<b>Formulation</b>	Lyophilized from a 0.2 µm filtered solution in PBS with 5% Trehalose and 5% Mannitol.
<b>Reconstitution</b>	It is recommended that sterile water be added to the vial to prepare a stock solution of 0.5 mg/mL. Concentration is measured by UV-Vis.

## Data



SDS-PAGE analysis of Human S100A7/PSOR1 proteins, 2µg/lane of Recombinant Human S100A7/PSOR1 proteins was resolved with SDS-PAGE under reducing conditions, showing bands at 13 KD.

## Background

S100A7 is a 11-12 kDa member of the S100 family of EF hand calcium binding proteins. Human S100A7 shares 32% amino acid sequence identity with mouse S100A7A, the closest related protein in mouse. It is acetylated at the N-terminus and binds both calcium and zinc ions. S100A7 is up-regulated in keratinocytes of psoriasis and atopic dermatitis lesions, as well as in epithelial cells of the tongue, eye, and female genital tract. Its up-regulation can be induced by bacterial exposure, inflammatory cytokines, or epidermal barrier disruption. S100A7 supports epithelial integrity through killing E. coli by sequestration of zinc and through inducing the up-regulation of tight junction proteins. The interaction of S100A7 with RAGE promotes the migration of immune cells and the infiltration of macrophages into tumor sites.

## For Research Use Only

A Reliable Research Partner in Life Science and Medicine  
Tel:400-999-2100

Email:[techsupport@elabscience.cn](mailto:techsupport@elabscience.cn)

Web:[www.elabscience.cn](http://www.elabscience.cn)

Rev. V1.3