

IL37 Polyclonal Antibody

catalog number: E-AB-18110

Note: Centrifuge before opening to ensure complete recovery of vial contents.

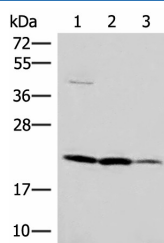
Description

Reactivity	Human
Immunogen	Synthetic peptide of human IL37
Host	Rabbit
Isotype	IgG
Purification	Antigen affinity purification
Buffer	Phosphate buffered solution, pH 7.4, containing 0.05% stabilizer and 50% glycerol.

Applications

Applications	Recommended Dilution
WB	1:500-1:2000
IHC	1:20-1:100

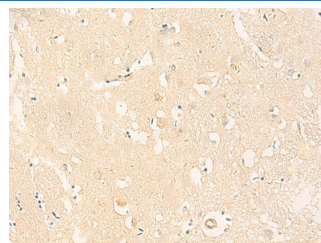
Data



Western blot analysis of A549 HT29 and Raji cell lysates using IL37 Polyclonal Antibody at dilution of 1:650

Observed-MW: Refer to figures

Calculated-MW: 24 kDa



Immunohistochemistry of paraffin-embedded Human brain tissue using IL37 Polyclonal Antibody at dilution of 1:50 (x200)

Preparation & Storage

Storage	Store at -20°C Valid for 12 months. Avoid freeze / thaw cycles.
Shipping	The product is shipped with ice pack, upon receipt, store it immediately at the temperature recommended.

Background

The protein encoded by this gene is a member of the interleukin 1 cytokine family. This cytokine can bind to, and may be a ligand for interleukin 18 receptor (IL18R1/IL-1Rrp). This cytokine also binds to interleukin 18 binding protein (IL18BP), an inhibitory binding protein of interleukin 18 (IL18), and subsequently forms a complex with IL18 receptor beta subunit, and through which it inhibits the activity of IL18. This gene along with eight other interleukin 1 family genes form a cytokine gene cluster on chromosome 2. Five alternatively spliced transcript variants encoding distinct isoforms have been reported. IL37 (Interleukin 37) is a Protein Coding gene. Diseases associated with IL37 include Rheumatoid Arthritis. Among its related pathways are Innate Immune System and Toll-Like receptor Signaling Pathways. GO annotations related to this gene include cytokine activity and interleukin-1 receptor binding. An important paralog of this gene is IL36G.

For Research Use Only