

Recombinant Human Kallikrein 6/KLK6 Protein (His Tag)

Catalog Number: PDEH100956

Note: Centrifuge before opening to ensure complete recovery of vial contents.

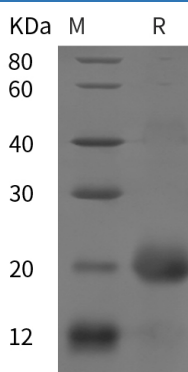
Description

Species	Human
Source	E.coli-derived Human Kallikrein 6 protein Glu81-Lys244, with an N-terminal His
Calculated MW	25.8 kDa
Observed MW	20 kDa
Accession	Q92876
Bio-activity	Not validated for activity

Properties

Purity	> 95% as determined by reducing SDS-PAGE.
Endotoxin	< 10 EU/mg of the protein as determined by the LAL method
Storage	Generally, lyophilized proteins are stable for up to 12 months when stored at -20 to -80 °C. Reconstituted protein solution can be stored at 4-8°C for 2-7 days. Aliquots of reconstituted samples are stable at < -20°C for 3 months.
Shipping	This product is provided as lyophilized powder which is shipped with ice packs.
Formulation	Lyophilized from a 0.2 µm filtered solution in PBS with 5% Trehalose and 5% Mannitol.
Reconstitution	It is recommended that sterile water be added to the vial to prepare a stock solution of 0.5 mg/mL. Concentration is measured by UV-Vis.

Data



> 95 % as determined by reducing SDS-PAGE.

Background

Tissue kallikreins are a family of extracellular serine proteases consisting of 15 members. The genes of this family aligned in tandem on chromosome 19q13.4 represent the largest contiguous group of proteases within the human genome. Tissue kallikreins have attracted great interest as potential biomarkers for various cancers, including prostate, ovarian, breast, testicular, and lung (2, 3). Human Kallikrein 6 (hKLK6) is a member of tissue kallikrein family observed in breast and brain tissues, colon carcinoma cells, and oligodendrocytes.

For Research Use Only

Toll-free: 1-888-852-8623
Web: www.elabscience.com

Tel: 1-832-243-6086
Email: techsupport@elabscience.com

Fax: 1-832-243-6017