

## RPS6KA5 Polyclonal Antibody

**catalog number: E-AB-19071**

**Note:** Centrifuge before opening to ensure complete recovery of vial contents.

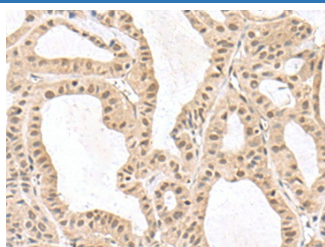
### Description

<b>Reactivity</b>	Human
<b>Immunogen</b>	Fusion protein of human RPS6KA5
<b>Host</b>	Rabbit
<b>Isotype</b>	IgG
<b>Purification</b>	Antigen affinity purification
<b>Buffer</b>	Phosphate buffered solution, pH 7.4, containing 0.05% stabilizer and 50% glycerol.

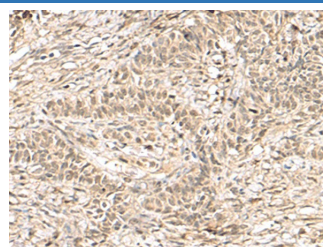
### Applications Recommended Dilution

<b>IHC</b>	1:200-1:300
------------	-------------

### Data



Immunohistochemistry of paraffin-embedded Human thyroid cancer tissue using RPS6KA5 Polyclonal Antibody at dilution of 1:170(×200)



Immunohistochemistry of paraffin-embedded Human ovarian cancer tissue using RPS6KA5 Polyclonal Antibody at dilution of 1:170(×200)

### Preparation & Storage

<b>Storage</b>	Store at -20°C Valid for 12 months. Avoid freeze / thaw cycles.
<b>Shipping</b>	The product is shipped with ice pack, upon receipt, store it immediately at the temperature recommended.

### Background

RPS6KA5 (Ribosomal Protein S6 Kinase A5) is a Protein Coding gene. Among its related pathways are ERK Signaling and L1CAM interactions. Gene Ontology (GO) annotations related to this gene include transferase activity, transferring phosphorus-containing groups and protein tyrosine kinase activity. An important paralog of this gene is RPS6KA4.

### For Research Use Only