

Recombinant Collagen II Monoclonal Antibody

catalog number: **AN301335L**

Note: Centrifuge before opening to ensure complete recovery of vial contents.

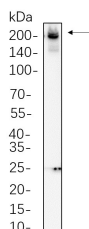
Description

Reactivity	Human
Immunogen	Recombinant Human Collagen II protein
Host	Rabbit
Isotype	IgG, κ
Clone	9A8
Purification	Protein A
Buffer	PBS, 50% glycerol, 0.05% Proclin 300, 0.05% protein protectant.

Applications Recommended Dilution

WB	1:1000-1:5000
-----------	---------------

Data



Western Blot with Recombinant Collagen II Monoclonal Antibody at dilution of 1:1000 dilution. Lane A: A431 whole cell lysate.

Observed-MW:200 kDa

Calculated-MW:142 kDa

Preparation & Storage

Storage	Store at -20°C Valid for 12 months. Avoid freeze / thaw cycles.
Shipping	Ice bag

Background

This gene encodes the alpha-1 chain of type II collagen, a fibrillar collagen found in cartilage and the vitreous humor of the eye. Mutations in this gene are associated with achondrogenesis, chondrodysplasia, early onset familial osteoarthritis, SED congenita, Langer-Saldino achondrogenesis, Kniest dysplasia, Stickler syndrome type I, and spondyloepimetaphyseal dysplasia Strudwick type. In addition, defects in processing chondrocalcin, a calcium binding protein that is the C-propeptide of this collagen molecule, are also associated with chondrodysplasia. There are two transcripts identified for this gene.

For Research Use Only