

## EML2 Polyclonal Antibody

**catalog number: E-AB-67621**

**Note:** Centrifuge before opening to ensure complete recovery of vial contents.

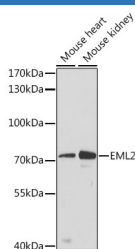
### Description

<b>Reactivity</b>	Human;Mouse
<b>Immunogen</b>	Recombinant fusion protein of human EML2 (NP_036287.1).
<b>Host</b>	Rabbit
<b>Isotype</b>	IgG
<b>Purification</b>	Affinity purification
<b>Buffer</b>	Phosphate buffered solution, pH 7.4, containing 0.05% stabilizer and 50% glycerol.

### Applications

<b>WB</b>	1:500-1:2000
-----------	--------------

### Data



Western blot analysis of extracts of various cell lines using EML2 Polyclonal Antibody at dilution of 1:3000.

**Observed-MV:71 kDa**

**Calculated-MV:70 kDa/86 kDa/92 kDa**

### Preparation & Storage

<b>Storage</b>	Store at -20°C Valid for 12 months. Avoid freeze / thaw cycles.
<b>Shipping</b>	The product is shipped with ice pack,upon receipt,store it immediately at the temperature recommended.

### Background

EML2 (EMAP Like 2) is a Protein Coding gene. Diseases associated with EML2 include Sulfonamide Allergy. Gene Ontology (GO) annotations related to this gene include signaling receptor binding and protein C-terminus binding. An important paralog of this gene is EML1.

### For Research Use Only