

Recombinant CRALBP Monoclonal Antibody

catalog number: AN301499L

Note: Centrifuge before opening to ensure complete recovery of vial contents.

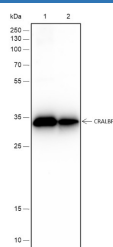
Description

Reactivity	Rat;Mouse
Immunogen	Recombinant human CRALBP fragment
Host	Rabbit
Isotype	IgG, κ
Clone	A194
Purification	Protein A purified
Buffer	PBS, 50% glycerol, 0.05% Proclin 300, 0.05% protein protectant.

Applications Recommended Dilution

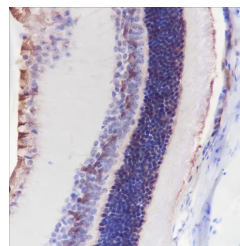
WB	1:500-1:1000
IHC	1:500-1:1000

Data



Western Blot with CRALBP Monoclonal Antibody at dilution of 1:1000. Lane 1: Mouse eye, Lane 2: Rat eye

Observed-MW:36 kDa
Calculated-MW:36 kDa



Immunohistochemistry of paraffin-embedded Mouse retina using CRALBP Monoclonal Antibody at dilution of 1:1000.

Preparation & Storage

Storage	Store at -20°C Valid for 12 months. Avoid freeze / thaw cycles.
Shipping	Ice bag

Background

Soluble retinoid carrier essential the proper function of both rod and cone photoreceptors. Participates in the regeneration of active 11-cis-retinol and 11-cis-retinaldehyde, from the inactive 11-trans products of the rhodopsin photocycle and in the de novo synthesis of these retinoids from 11-trans metabolic precursors. The cycling of retinoids between photoreceptor and adjacent pigment epithelium cells is known as the 'visual cycle'.

For Research Use Only