

## Elab Fluor® Violet 540 Anti-Human HLA-DR Antibody[L243]

Catalog Number: E-AB-F1111T3

**Note:** Centrifuge before opening to ensure complete recovery of vial contents.

### Description

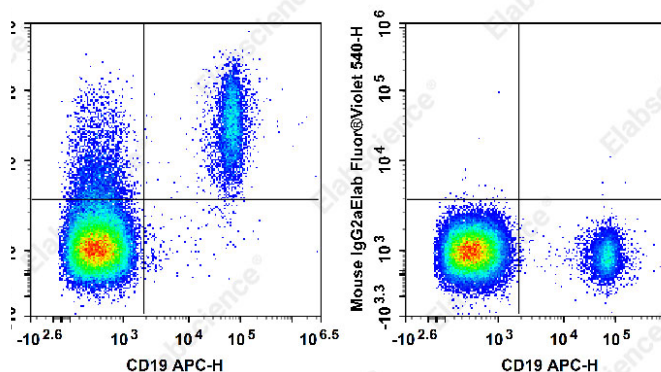
Reactivity	Human
Host	Mouse
Isotype	Mouse IgG2a, κ
Clone No.	L243
Isotype Control	Elab Fluor® Violet 540 Mouse IgG2a, κ Isotype Control[C1.18.4] [Product E-AB-F09802T3]
Conjugation	Elab Fluor® Violet 540
Conjugation Information	Elab Fluor® Violet 540 is designed to be excited by the violet laser (405 nm) and detected using an optical filter centered near 548 nm (e.g., a 572/28 nm bandpass filter).
Storage Buffer	Phosphate buffered solution, pH 7.2, containing 0.09% stabilizer and 1% protein protectant.

### Applications

### Recommended usage

FCM	Each lot of this antibody is quality control tested by flow cytometric analysis. <b>The amount of the reagent is suggested to be used 5 μL of antibody per test (million cells in 100 μL staining volume or per 100 μL of whole blood).</b> Please check your vial before the experiment. Since applications vary, the appropriate dilutions must be determined for individual use.
-----	---

### Data



Staining of normal human peripheral blood cells with APC

Anti-Human CD19 Antibody[CB19] and Elab Fluor® Violet 540 Anti-Human HLA-DR Antibody[L243](left) or Elab Fluor® Violet 540 Mouse IgG2a, κ Isotype Control(right). Cells in the lymphocytes gate were used for analysis.

### Preparation & Storage

Storage	Keep as concentrated solution. This product can be stored at 2-8°C for 12 months. Please protected from prolonged exposure to light and do not freeze.
Shipping	Ice bag

### Antigen Information

Alternate Names	DRA/DRB1;HLA class II histocompatibility antigen DR alpha/ DRB1-15 beta chain;HLA-DRA1/DRB1;MHC class II antigen DRA
-----------------	--

### For Research Use Only

Toll-free: 1-888-852-8623  
Web: [www.elabscience.com](http://www.elabscience.com)

Tel: 1-832-243-6086  
Email: [techsupport@elabscience.com](mailto:techsupport@elabscience.com)

Fax: 1-832-243-6017

Rev. V1.7

<b>Uniprot ID</b>	P01903;P01911;
<b>Gene ID</b>	3122;3123
<b>Background</b>	HLA-DR is a heterodimeric cell surface glycoprotein comprised of a 36 kD $\alpha$ (heavy) chain and a 27 kD $\beta$ (light) chain. It is expressed on B cells, activated T cells, monocytes/macrophages, dendritic cells, and other non-professional APCs. In conjunction with the CD3/TCR complex and CD4 molecules, HLA-DR is critical for efficient peptide presentation to CD4+ T cells.