

Recombinant Human CGREF1/CGR11 Protein (His Tag)

Catalog Number: PKSH032243

Note: Centrifuge before opening to ensure complete recovery of vial contents.

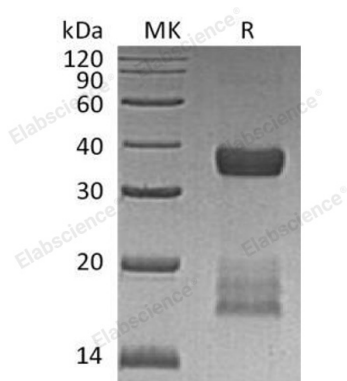
Description

Species	Human
Source	HEK293 Cells-derived Human CGREF1;CGR11 protein Ala20-Ile301, with an C-terminal His
Calculated MW	30.9 kDa
Observed MW	29-42 kDa
Accession	A0A4W8VYG7
Bio-activity	Not validated for activity

Properties

Purity	> 95 % as determined by reducing SDS-PAGE.
Endotoxin	< 1.0 EU per µg of the protein as determined by the LAL method.
Storage	Generally, lyophilized proteins are stable for up to 12 months when stored at -20 to -80 °C. Reconstituted protein solution can be stored at 4-8°C for 2-7 days. Aliquots of reconstituted samples are stable at < -20°C for 3 months.
Shipping	This product is provided as lyophilized powder which is shipped with ice packs.
Formulation	Lyophilized from a 0.2 µm filtered solution of 20mM Tris-HCl, 150mM NaCl, 1mM CaCl ₂ , pH 7.5. Normally 5% - 8% trehalose, mannitol and 0.01% Tween 80 are added as protectants before lyophilization. Please refer to the specific buffer information in the printed manual.
Reconstitution	Please refer to the printed manual for detailed information.

Data



> 95 % as determined by reducing SDS-PAGE.

Background

Cell Growth Regulator with EF Hand Domain Protein 1 (CGREF1) is a secreted calcium ion binding protein. CGREF1 contains two EF-hand domains and both EF-hands are required for function. Human CGREF1 is synthesized as a 301 amino acid precursor that contains a 19 amino acid signal sequence, and a 282 amino acid mature chain. CGREF1 is probably digested extracellularly by an unknown serine protease generating extremely hydrophobic bioactive peptides. CGREF1 mediates cell-cell adhesion in a calcium-dependent manner. In addition, CGREF1 is able to inhibit growth in several cell lines.

For Research Use Only