

## HRP-conjugated beta actin Monoclonal Antibody

catalog number: **AN00295HP**

**Note:** Centrifuge before opening to ensure complete recovery of vial contents.

### Description

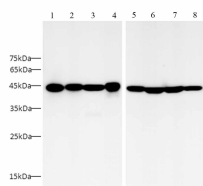
<b>Reactivity</b>	Human;Mouse;Rat
<b>Immunogen</b>	Recombinant human Beta actin protein by E. Coli
<b>Host</b>	Mouse
<b>Isotype</b>	IgG1
<b>Clone</b>	3A9
<b>Purification</b>	Protein A/G Purification
<b>Buffer</b>	PBS with 0.05% Proclin300, 1% protective protein and 50% glycerol, pH7.4

### Applications

### Recommended Dilution

<b>WB</b>	1:2500-1:5000
-----------	---------------

### Data



Western blot with HRP-conjugated beta actin Monoclonal

Antibody at dilution of 1:5000. lane 1:Raji whole cell lysate, lane 2:Jurkat whole cell lysate, lane 3:HL-60 whole cell lysate, lane 4:U87-MG whole cell lysate, lane 5:mouse lung whole cell lysate, lane 6:rat lung whole cell lysate, lane 7:Raw264.7 whole cell lysate, lane 8:C6 whole cell lysate

**Observed-MW:43 kDa**

**Calculated-MW:43 kDa**

### Preparation & Storage

<b>Storage</b>	Store at -20°C Valid for 12 months. Avoid freeze / thaw cycles. Protected from prolonged exposure to light.
<b>Shipping</b>	The product is shipped with ice pack, upon receipt, store it immediately at the temperature recommended.

### Background

Beta-actin (ACTB/ACTB) is one of six different actin isoforms in humans. Actins are highly conserved proteins that are involved in cell motility, structure and integrity. Beta actin is a major constituent of the contractile apparatus and one of the two nonmuscle cytoskeletal actins. Beta-actin gene is stably and constitutively expressed at high levels in most tissues and cells, and commonly used as a loading control for western blot and as a control for qPCR.

### For Research Use Only