

IPO11 Polyclonal Antibody

catalog number: **E-AB-18875**

Note: Centrifuge before opening to ensure complete recovery of vial contents.

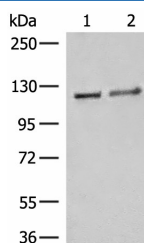
Description

Reactivity	Human;Mouse
Immunogen	Fusion protein of human IPO11
Host	Rabbit
Isotype	IgG
Purification	Antigen affinity purification
Buffer	Phosphate buffered solution, pH 7.4, containing 0.05% stabilizer and 50% glycerol.

Applications

Applications	Recommended Dilution
WB	1:500-1:2000
IHC	1:50-1:300

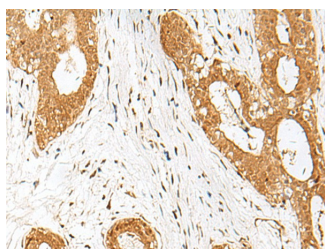
Data



Western blot analysis of K562 cell Human fetal brain tissue lysates using IPO11 Polyclonal Antibody at dilution of 1:500

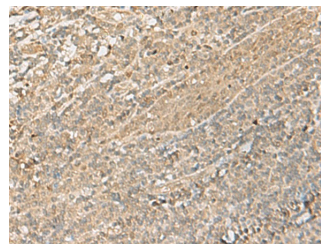
Observed-MW:Refer to figures

Calculated-MW:113 kDa



Immunohistochemistry of paraffin-embedded Human breast cancer tissue using IPO11 Polyclonal Antibody at dilution of

1:70(×200)



Immunohistochemistry of paraffin-embedded Human tonsil tissue using IPO11 Polyclonal Antibody at dilution of

1:70(×200)

Preparation & Storage

Storage	Store at -20°C Valid for 12 months. Avoid freeze / thaw cycles.
Shipping	The product is shipped with ice pack,upon receipt,store it immediately at the temperature recommended.

Background

Importins, including IPO11, are a members of the karyopherin/importin-beta family of transport receptors (see KPNB1; 602738) that mediate nucleocytoplasmic transport of protein and RNA cargoes (Plafker and Macara, 2000 [PubMed 11032817]).

For Research Use Only