

## Recombinant IKB epsilon Monoclonal Antibody

catalog number: **AN300740L**

**Note:** Centrifuge before opening to ensure complete recovery of vial contents.

### Description

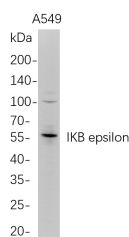
<b>Reactivity</b>	Human
<b>Immunogen</b>	Recombinant Human IKB epsilon protein
<b>Host</b>	Rabbit
<b>Isotype</b>	IgG, $\kappa$
<b>Clone</b>	11G1
<b>Purification</b>	Protein A
<b>Buffer</b>	PBS, 50% glycerol, 0.05% Proclin 300, 0.05% protein protectant.

### Applications

### Recommended Dilution

<b>WB</b>	1:1000-5000
-----------	-------------

### Data



Western Blot with Recombinant IKB epsilon Monoclonal Antibody at dilution of 1:1000 dilution. Lane A: A549 whole cell lysate.

**Observed-MW:55 kDa**

### Preparation & Storage

<b>Storage</b>	Store at -20°C Valid for 12 months. Avoid freeze / thaw cycles.
<b>Shipping</b>	Ice bag

### Background

The protein encoded by this gene binds to components of NF-kappa-B, trapping the complex in the cytoplasm and preventing it from activating genes in the nucleus. Phosphorylation of the encoded protein targets it for destruction by the ubiquitin pathway, which activates NF-kappa-B by making it available to translocate to the nucleus.

### For Research Use Only