

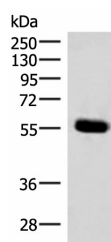
## IPPK Polyclonal Antibody

catalog number: E-AB-18125

**Note:** Centrifuge before opening to ensure complete recovery of vial contents.

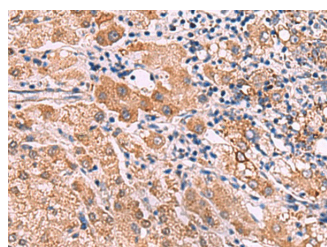
Description	
Reactivity	Human;Mouse;Rat
Immunogen	Synthetic peptide of human IPPK
Host	Rabbit
Isotype	IgG
Purification	Antigen affinity purification
Conjugation	Unconjugated
Buffer	Phosphate buffered solution, pH 7.4, containing 0.05% stabilizer and 50% glycerol.
Applications	Recommended Dilution
WB	1:500-1:2000
IHC	1:30-1:150

## Data

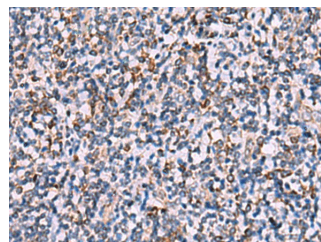


Western blot analysis of Mouse pancreas tissue lysate using IPPK Polyclonal Antibody at dilution of 1:350

**Observed-MV:Refer to figures**  
**Calculated-MV:56 kDa**



Immunohistochemistry of paraffin-embedded Human liver cancer tissue using IPPK Polyclonal Antibody at dilution of 1:30(×200)



Immunohistochemistry of paraffin-embedded Human tonsil tissue using IPPK Polyclonal Antibody at dilution of 1:30(×200)

## Preparation & Storage

<b>Storage</b>	Store at -20°C Valid for 12 months. Avoid freeze / thaw cycles.
<b>Shipping</b>	The product is shipped with ice pack, upon receipt, store it immediately at the temperature recommended.

## Background

The protein encoded by this gene is a kinase that phosphorylates position 2 of inositol-1,3,4,5,6-pentakisphosphate to form inositol-1,2,3,4,5,6-hexakisphosphate (InsP6). InsP6 has a variety of functions, including stimulation of DNA repair, endocytosis, and mRNA export.

## For Research Use Only