

Recombinant APG5L Monoclonal Antibody

catalog number: **E-AB-81459**

Note: Centrifuge before opening to ensure complete recovery of vial contents.

Description

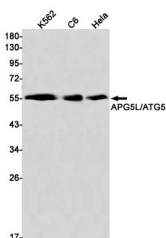
Reactivity	Human;Mouse;Rat
Immunogen	A synthetic peptide of human APG5L/ATG5
Host	Rabbit
Isotype	IgG
Clone	R05-4F2
Purification	Affinity Purified
Buffer	50mM Tris-Glycine(pH 7.4), 0.15M NaCl, 40% Glycerol, 0.05% stabilizer and 0.05% protective protein.

Applications

Recommended Dilution

WB	1:1000-1:2000
IF	1:20-1:100

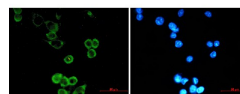
Data



Western blot detection of APG5L/ATG5 Rabbit pA in K562,C6,HeLa cell lysates using APG5L/ATG5 Rabbit mAb(1:1000 diluted).Predicted band size:33kDa.Observed band size:55kDa.

Observed-MW:55 kDa

Calculated-MW:33 kDa



Immunofluorescence of APG5L/ATG5 (green) in MCF-7 using APG5L/ATG5 antibody at dilution 1:20, and DAPI(blue)

Preparation & Storage

Storage	Store at -20°C Valid for 12 months. Avoid freeze / thaw cycles.
Shipping	The product is shipped with ice pack,upon receipt,store it immediately at the temperature recommended.

Background

ATG5,also named as APG5L and ASP,belongs to the ATG5 family. It is required for autophagy. It plays an important role in the apoptotic process,possibly within the modified cytoskeleton. Its expression is a relatively late event in the apoptotic process,occurring downstream of caspase activity. Autophagy is a catabolic process for the autophagosome-lysosomal degradation of bulk cytoplasmic contents. Formation of the autophagosome involves a ubiquitin-like conjugation system in which Atg12 is covalently bound to Atg5 and targeted to autophagosome vesicles. It mediates autophagosome-independent host protection.

For Research Use Only