

## PE Anti-Human Integrin $\beta 7$ Antibody[FIB504]

Catalog Number: AN00571D

**Note:** Centrifuge before opening to ensure complete recovery of vial contents.

### Description

Reactivity	Human
Host	Rat
Isotype	Rat IgG2a, $\kappa$
Clone No.	FIB504
Isotype Control	PE Rat IgG2a, $\kappa$ Isotype Control[2A3] [Product E-AB-F09832D]
Conjugation	PE
Conjugation Information	PE is designed to be excited by the Blue (488 nm), Green (532 nm) and Yellow-Green (561 nm) lasers and detected using an optical filter centered near 575 nm (e.g., a 585/42 nm bandpass filter).
Storage Buffer	Phosphate buffered solution, pH 7.2, containing 0.09% sodium azide and 1% BSA.

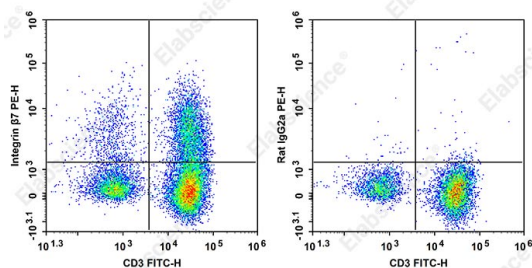
### Applications

FCM

### Recommended usage

Each lot of this antibody is quality control tested by flow cytometric analysis. **The amount of the reagent is suggested to be used 5  $\mu$ L of antibody per test (million cells in 100  $\mu$ L staining volume or per 100  $\mu$ L of whole blood).** Please check your vial before the experiment. Since applications vary, the appropriate dilutions must be determined for individual use.

### Data



Staining of normal human peripheral blood cells with PE Anti-Human Integrin  $\beta 7$  Antibody[FIB504] (filled gray histogram) or PE Rat IgG2a,  $\kappa$  Isotype Control (empty black histogram). Cells in the lymphocytes gate were used for analysis.

### Preparation & Storage

Storage	Keep as concentrated solution. This product can be stored at 2-8°C for 12 months. Please protected from prolonged exposure to light and do not freeze.
Shipping	Ice bag

### Antigen Information

Alternate Names	VI 6T-101;VI A024
Uniprot ID	P26010;P26011

### For Research Use Only

**Gene ID**

3695;16421

**Background**

Integrin  $\beta 7$  is a 130 kD glycoprotein also known as integrin  $\beta p$ . It is a member of the Ig superfamily. In association with integrin  $\alpha 4$  or  $\alpha E$  chain,  $\beta 7$  forms  $\alpha 4/\beta 7$  or  $\alpha E/\beta 7$  heterodimer.  $\alpha 4/\beta 7$  (CD49d/ $\beta 7$ , LPAM-1) is expressed on the majority of peripheral lymphocytes, on small subsets of thymocytes, and bone marrow progenitors. LPAM-1 binds to several ligands, VCAM-1, MAdCAM-1 and fibronectin, and is involved in lymphocyte adhesion and some hematopoietic progenitor cells migration.  $\alpha E/\beta 7$  (CD103/ $\beta 7$ ,  $\alpha IEL/\beta 7$ ) is expressed on intestinal intraepithelial lymphocytes (IEL), dendritic epidermal T cells, T regulatory cells, a subset of CD8+ T cells in lymph nodes and lamina propria. CD103/ $\beta 7$  complex is thought to play a role in lymphocyte retention via interaction with its ligand E-Cadherin.