

## SLC25A11 Polyclonal Antibody

**catalog number: E-AB-65573**

**Note:** Centrifuge before opening to ensure complete recovery of vial contents.

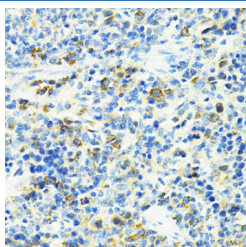
### Description

|                     |  |
|---------------------|--|
| <b>Reactivity</b>   | Human;Mouse;Rat  |
| <b>Immunogen</b>    | Recombinant fusion protein of human SLC25A11 (NP_003553.2).                        |
| <b>Host</b>         | Rabbit   |
| <b>Isotype</b>      | IgG  |
| <b>Purification</b> | Affinity purification  |
| <b>Buffer</b>       | Phosphate buffered solution, pH 7.4, containing 0.05% stabilizer and 50% glycerol. |

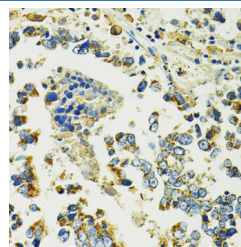
### Applications

| Applications | Recommended Dilution |
|--------------|----------------------|
| IHC          | 1:50-1:100           |

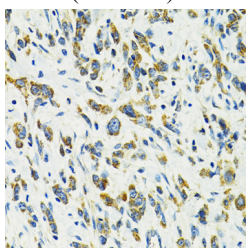
### Data



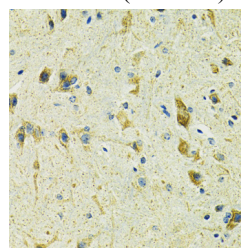
Immunohistochemistry of paraffin-embedded Rat spleen using SLC25A11 Polyclonal Antibody at dilution of 1:100 (40x lens).



Immunohistochemistry of paraffin-embedded Human colon carcinoma using SLC25A11 Polyclonal Antibody at dilution of 1:100 (40x lens).



Immunohistochemistry of paraffin-embedded Human gastric cancer using SLC25A11 Polyclonal Antibody at dilution of 1:100 (40x lens).



Immunohistochemistry of paraffin-embedded Mouse spinal cord using SLC25A11 Polyclonal Antibody at dilution of 1:100 (40x lens).

### Preparation & Storage

|                 |  |
|-----------------|--|
| <b>Storage</b>  | Store at -20°C Valid for 12 months. Avoid freeze / thaw cycles.  |
| <b>Shipping</b> | The product is shipped with ice pack, upon receipt, store it immediately at the temperature recommended. |

### Background

The oxoglutarate/malate carrier transports 2-oxoglutarate across the inner membranes of mitochondria in an electroneutral exchange for malate or other dicarboxylic acids, and plays an important role in several metabolic processes, contains the malate-aspartate shuttle, the oxoglutarate/isocitrate shuttle, in gluconeogenesis from lactate, and in nitrogen metabolism.

### For Research Use Only