

RELB Polyclonal Antibody

catalog number: E-AB-70221

Note: Centrifuge before opening to ensure complete recovery of vial contents.

Description

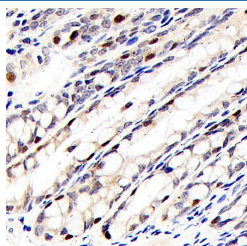
Reactivity	Mouse;Rat
Immunogen	KLH conjugated Synthetic peptide corresponding to Mouse RelB
Host	Rabbit
Isotype	IgG
Purification	Affinity purification
Buffer	Phosphate buffered solution, pH 7.4, containing 0.05% stabilizer, 1% protein protectant and 50% glycerol.

Applications

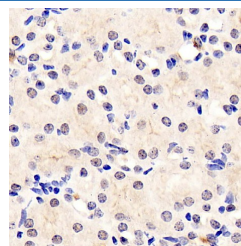
Recommended Dilution

IHC	1:300-1:1000
------------	--------------

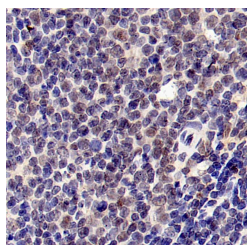
Data



Immunohistochemistry analysis of paraffin-embedded mouse colon using RELB Polyclonal Antibody at dilution of 1:400.



Immunohistochemistry analysis of paraffin-embedded mouse kidney using RELB Polyclonal Antibody at dilution of 1:400.



Immunohistochemistry analysis of paraffin-embedded rat spleen using RELB Polyclonal Antibody at dilution of 1:400.

Preparation & Storage

Storage	Store at -20°C Valid for 12 months. Avoid freeze / thaw cycles.
Shipping	The product is shipped with ice pack, upon receipt, store it immediately at the temperature recommended.

Background

RELB, also named as Transcription factor RelB, is a 579 amino acid protein, which contains one RHD domain. RELB localizes in the nucleus and cytoplasm. RELB is a pleiotropic transcription factor which is present in almost all cell types and is involved in many biological processes such as inflammation, immunity, differentiation, cell growth, tumorigenesis and apoptosis.

For Research Use Only