

## MAD2/MAD2L1 Polyclonal Antibody

catalog number: E-AB-91653

**Note:** Centrifuge before opening to ensure complete recovery of vial contents.

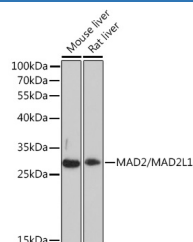
### Description

<b>Reactivity</b>	Human;Mouse;Rat
<b>Immunogen</b>	Recombinant fusion protein of human MAD2/MAD2/MAD2L1
<b>Host</b>	Rabbit
<b>Isotype</b>	IgG
<b>Purification</b>	Affinity purification
<b>Buffer</b>	Phosphate buffered solution, pH 7.4, containing 0.05% stabilizer and 50% glycerol.

### Applications

<b>WB</b>	1:500-1:2000
-----------	--------------

### Data



Western blot analysis of extracts of various cell lines using  
MAD2/MAD2/MAD2L1 Polyclonal Antibody at 1:3000  
dilution.

**Observed-MW:27 kDa**

**Calculated-MW:10 kDa/23 kDa**

### Preparation & Storage

<b>Storage</b>	Store at -20°C Valid for 12 months. Avoid freeze / thaw cycles.
<b>Shipping</b>	The product is shipped with ice pack, upon receipt, store it immediately at the temperature recommended.

### Background

MAD2L1 is a component of the mitotic spindle assembly checkpoint that prevents the onset of anaphase until all chromosomes are properly aligned at the metaphase plate. MAD2L1 is related to the MAD2L2 gene located on chromosome 1. A MAD2 pseudogene has been mapped to chromosome 14.

### For Research Use Only