

## SULT1A1 Monoclonal Antibody

catalog number: **AN200121P**

**Note:** Centrifuge before opening to ensure complete recovery of vial contents.

### Description

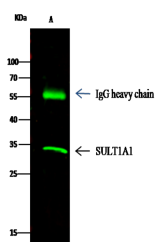
<b>Reactivity</b>	Human
<b>Immunogen</b>	Recombinant Human SULT1A1 protein
<b>Host</b>	Mouse
<b>Isotype</b>	IgG1
<b>Clone</b>	4F11
<b>Purification</b>	Protein A
<b>Buffer</b>	0.2 µm filtered solution in PBS

### Applications

### Recommended Dilution

<b>WB</b>	1:500-1:2000
<b>IP</b>	1-4 µL/mg of lysate

### Data

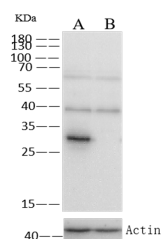


Immunoprecipitation analysis using 2 µL anti-SULT1A1 mouse Monoclonal Antibody and 15 µl of 50 % Protein G agarose. Western blot was performed from the immunoprecipitate using SULT1A1 mouse Monoclonal Antibody at a dilution of 1:100. Lane A: 0.5 mg HepG2

Whole Cell Lysate

**Observed-MW:34 kDa**

**Calculated-MW:34 kDa**



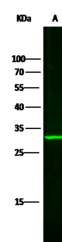
Western Blot with SULT1A1 Monoclonal Antibody at dilution of 1:500. Lane A: HepG2 Whole Cell Lysate, Lane

B: SULTA1 konckout HepG2 Whole Cell Lysate,

Lysates/proteins at 30 µg per lane.

**Observed-MW:34 kDa**

**Calculated-MW:34 kDa**



Western Blot with SULT1A1 Monoclonal Antibody at dilution of 1:500. Lane A: HepG2 Whole Cell Lysate, Lysates/proteins at 30 µg per lane.

**Observed-MW:34 kDa**

**Calculated-MW:34 kDa**

### Preparation & Storage

### For Research Use Only

Toll-free: 1-888-852-8623  
Web: [www.elabscience.com](http://www.elabscience.com)

Tel: 1-832-243-6086  
Email: [techsupport@elabscience.com](mailto:techsupport@elabscience.com)

Fax: 1-832-243-6017

Rev. V1.1

**Storage**

This antibody can be stored at 2°C-8°C for one month without detectable loss of activity. Antibody products are stable for twelve months from date of receipt when stored at -20°C to -80°C. Preservative-Free. Avoid repeated freeze-thaw cycles.

**Shipping**

Ice bag

**Background**

Sulfotransferase enzymes catalyze the sulfate conjugation of many hormones, neurotransmitters, drugs, and xenobiotic compounds. These cytosolic enzymes are different in their tissue distributions and substrate specificities. The gene structure (number and length of exons) is similar among family members. This gene encodes one of two phenol sulfotransferases with thermostable enzyme activity. Multiple alternatively spliced variants that encode two isoforms have been identified for this gene.

**For Research Use Only**

Toll-free: 1-888-852-8623

Web: [www.elabscience.com](http://www.elabscience.com)

Tel: 1-832-243-6086

Email: [techsupport@elabscience.com](mailto:techsupport@elabscience.com)

Fax: 1-832-243-6017

Rev. V1.1