

## HBG1/HBG2 Polyclonal Antibody

catalog number: E-AB-18774

**Note:** Centrifuge before opening to ensure complete recovery of vial contents.

### Description

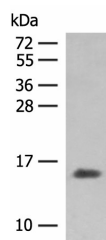
Reactivity	Human
Immunogen	Fusion protein of human HBG1/HBG2
Host	Rabbit
Isotype	IgG
Purification	Antigen affinity purification
Conjugation	Unconjugated
Buffer	Phosphate buffered solution, pH 7.4, containing 0.05% stabilizer and 50% glycerol.

### Applications

### Recommended Dilution

WB	1:500-1:2000
IHC	1:40-1:200

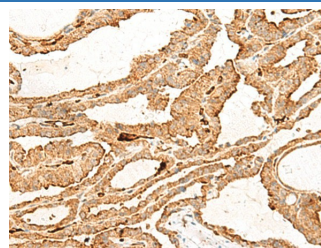
### Data



Western blot analysis of Human plasma solution using HBG1:HBG2 Polyclonal Antibody at dilution of 1:250

**Observed-MW:Refer to figures**

**Calculated-MW:16 kDa**



Immunohistochemistry of paraffin-embedded Human thyroid cancer tissue using HBG1:HBG2 Polyclonal Antibody at dilution of 1:70(×200)

### Preparation & Storage

Storage	Store at -20°C Valid for 12 months. Avoid freeze / thaw cycles.
Shipping	The product is shipped with ice pack, upon receipt, store it immediately at the temperature recommended.

### Background

The gamma globin genes (HBG1 and HBG2) are normally expressed in the fetal liver, spleen and bone marrow. Two gamma chains together with two alpha chains constitute fetal hemoglobin (HbF) which is normally replaced by adult hemoglobin (HbA) at birth. In some beta-thalassemias and related conditions, gamma chain production continues into adulthood. The two types of gamma chains differ at residue 136 where glycine is found in the G-gamma product (HBG2) and alanine is found in the A-gamma product (HBG1). The former is predominant at birth. The order of the genes in the beta-globin cluster is: 5'-epsilon -- gamma-G -- gamma-A -- delta -- beta--3'.

### For Research Use Only