

## RNF166 Polyclonal Antibody

catalog number: **E-AB-90429**

**Note:** Centrifuge before opening to ensure complete recovery of vial contents.

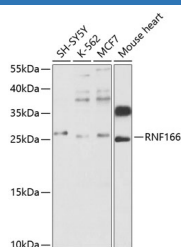
### Description

<b>Reactivity</b>	Human;Mouse
<b>Immunogen</b>	A synthetic peptide of human RNF166
<b>Host</b>	Rabbit
<b>Isotype</b>	IgG
<b>Purification</b>	Affinity purification
<b>Buffer</b>	Phosphate buffered solution, pH 7.4, containing 0.05% stabilizer and 50% glycerol.

### Applications

<b>WB</b>	1:500-1:2000
-----------	--------------

### Data



Western blot analysis of extracts of various cell lines using RNF166 Polyclonal Antibody at 1:1000 dilution.

**Observed-MV:26 kDa**

**Calculated-MV:14 kDa/17 kDa/26 kDa**

### Preparation & Storage

<b>Storage</b>	Store at -20°C Valid for 12 months. Avoid freeze / thaw cycles.
<b>Shipping</b>	The product is shipped with ice pack, upon receipt, store it immediately at the temperature recommended.

### Background

E3 ubiquitin-protein ligase that promotes the ubiquitination of different substrates. In turn, participates in different biological processes including interferon production or autophagy. Plays a role in the activation of RNA virus-induced interferon-beta production by promoting the ubiquitination of TRAF3 and TRAF6. Plays also a role in the early recruitment of autophagy adapters to bacteria. Mediates 'Lys-29' and 'Lys-33'-linked ubiquitination of SQSTM1 leading to xenophagic targeting of bacteria and inhibition of their replication.

### For Research Use Only