

## RGS4 Polyclonal Antibody

**catalog number: E-AB-15342**

**Note:** Centrifuge before opening to ensure complete recovery of vial contents.

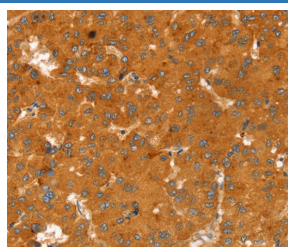
### Description

<b>Reactivity</b>	Human;Mouse;Rat
<b>Immunogen</b>	Recombinant protein of human RGS4
<b>Host</b>	Rabbit
<b>Isotype</b>	IgG
<b>Purification</b>	Affinity purification
<b>Buffer</b>	Phosphate buffered solution, pH 7.4, containing 0.05% stabilizer and 50% glycerol.

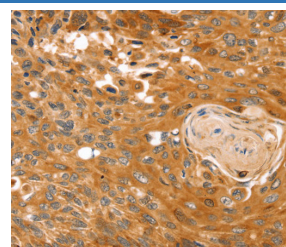
### Applications Recommended Dilution

<b>IHC</b>	1:25-1:100
------------	------------

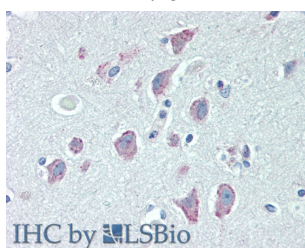
### Data



Immunohistochemistry of paraffin-embedded Human liver cancer tissue using RGS4 Polyclonal Antibody at dilution 1:25



Immunohistochemistry of paraffin-embedded Human esophagus cancer tissue using RGS4 Polyclonal Antibody at dilution 1:25



Immunohistochemistry of paraffin-embedded Brain, Cortex tissue using RGS4 Polyclonal Antibody at dilution of 1:100(Elabscience Product Detected by Lifespan).

### Preparation & Storage

<b>Storage</b>	Store at -20°C Valid for 12 months. Avoid freeze / thaw cycles.
<b>Shipping</b>	The product is shipped with ice pack, upon receipt, store it immediately at the temperature recommended.

### Background

Regulator of G protein signaling (RGS) family members are regulatory molecules that act as GTPase activating proteins (GAPs) for Gα subunits of heterotrimeric G proteins. RGS proteins are able to deactivate G protein subunits of the Giα, Goα and Gqα subtypes. They drive G proteins into their inactive GDP-bound forms. Regulator of G protein signaling 4 belongs to this family. All RGS proteins share a conserved 120-amino acid sequence termed the RGS domain.

### For Research Use Only