

## Recombinant Mouse CXCL10 Protein (His Tag)

**Catalog Number:** PDEM100341

**Note:** Centrifuge before opening to ensure complete recovery of vial contents.

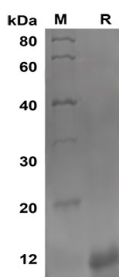
### Description

<b>Species</b>	Mouse
<b>Source</b>	E.coli-derived Mouse CXCL10 protein Ile22-Pro98, with an N-terminal His
<b>Calculated MW</b>	8.36 kDa
<b>Observed MW</b>	12 kDa
<b>Accession</b>	P17515
<b>Bio-activity</b>	Not validated for activity

### Properties

<b>Purity</b>	> 95% as determined by reducing SDS-PAGE.
<b>Endotoxin</b>	< 10 EU/mg of the protein as determined by the LAL method
<b>Storage</b>	Generally, lyophilized proteins are stable for up to 12 months when stored at -20 to -80 °C. Reconstituted protein solution can be stored at 4-8°C for 2-7 days. Aliquots of reconstituted samples are stable at < -20°C for 3 months.
<b>Shipping</b>	This product is provided as lyophilized powder which is shipped with ice packs.
<b>Formulation</b>	Lyophilized from a 0.2 µm filtered solution in PBS with 5% Trehalose and 5% Mannitol.
<b>Reconstitution</b>	It is recommended that sterile water be added to the vial to prepare a stock solution of 0.5 mg/mL. Concentration is measured by UV-Vis.

### Data



SDS-PAGE analysis of Mouse CXCL10 proteins, 2µg/lane of

Recombinant Mouse CXCL10 proteins was resolved with SDS-PAGE under reducing conditions, showing bands at 12 KD

### Background

Human C-X-C Motif Chemokine Ligand 10 (CXCL10) is a non-ELR chemokine secreted by various cell types; such as monocytes; endothelial cells and fibroblasts; in response to IFN-γ. CXCL10 functions via chemokine receptor CXCR3. CXCL10 has been attributed to several roles; such as chemoattraction for activated T-lymphocytes; inhibition of angiogenesis; and antitumor activity.

### For Research Use Only

Toll-free: 1-888-852-8623  
Web: [www.elabscience.com](http://www.elabscience.com)

Tel: 1-832-243-6086  
Email: [techsupport@elabscience.com](mailto:techsupport@elabscience.com)

Fax: 1-832-243-6017

Rev. V1.1