

## Recombinant CD15/SSEA1 Monoclonal Antibody

catalog number: **AN301464L**

**Note:** Centrifuge before opening to ensure complete recovery of vial contents.

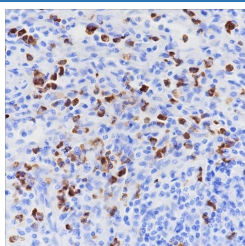
### Description

<b>Reactivity</b>	Human;Rat;Mouse
<b>Immunogen</b>	Recombinant human CD15/SSEA1 fragment
<b>Host</b>	Rabbit
<b>Isotype</b>	IgG, $\kappa$
<b>Clone</b>	A159
<b>Purification</b>	Protein A purified
<b>Buffer</b>	PBS, 50% glycerol, 0.05% Proclin 300, 0.05% protein protectant.

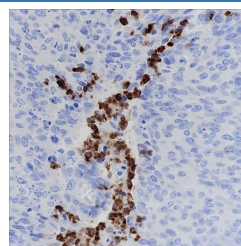
### Applications Recommended Dilution

<b>IHC</b>	1:50-1:100
<b>IF</b>	1:50
<b>FCM</b>	1:50

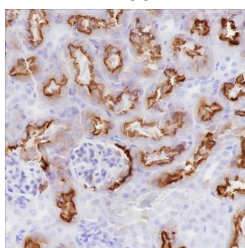
### Data



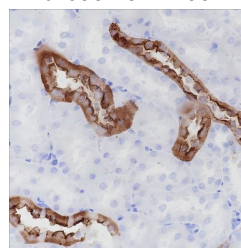
Immunohistochemistry of paraffin-embedded Human spleen using CD15/SSEA1 Monoclonal Antibody at dilution of 1:100.



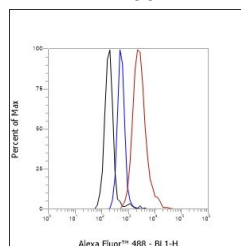
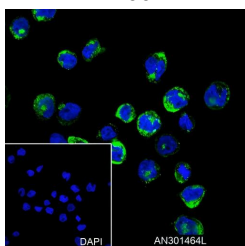
Immunohistochemistry of paraffin-embedded Human cervical cancer using CD15/SSEA1 Monoclonal Antibody at dilution of 1:100.



Immunohistochemistry of paraffin-embedded Mouse kidney using CD15/SSEA1 Monoclonal Antibody at dilution of 1:100.



Immunohistochemistry of paraffin-embedded Rat kidney using CD15/SSEA1 Monoclonal Antibody at dilution of 1:100.



### For Research Use Only

Toll-free: 1-888-852-8623  
Web: [www.elabscience.com](http://www.elabscience.com)

Tel: 1-832-243-6086  
Email: [techsupport@elabscience.com](mailto:techsupport@elabscience.com)

Fax: 1-832-243-6017

Rev. V1.0

Immunofluorescent analysis of (4% Paraformaldehyde) fixed THP-1 cells using anti-CD15/SSEA1 Monoclonal Antibody at a dilution of 1:50. Flow cytometric analysis of human CD15/SSEA1 expression on THP-1 cells. Cells were stained with purified anti-Human CD15/SSEA1, then a Alexa Fluor 488-conjugated second step antibody. The histogram were derived from events with the forward and side light-scatter characteristics of intact cells.

## Preparation & Storage

<b>Storage</b>	Store at -20°C Valid for 12 months. Avoid freeze / thaw cycles.
<b>Shipping</b>	Ice bag

## Background

The glycan determinant CD15 is a distinguishing marker for human myeloid cells and mediates neutrophil adhesion to dendritic cells.

## For Research Use Only