

PPP1CC Polyclonal Antibody

catalog number: **E-AB-16728**

Note: Centrifuge before opening to ensure complete recovery of vial contents.

Description

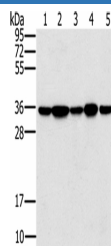
Reactivity	Human;Mouse;Rat
Immunogen	Synthetic peptide of human PPP1CC
Host	Rabbit
Isotype	IgG
Purification	Affinity purification
Buffer	Phosphate buffered solution, pH 7.4, containing 0.05% stabilizer and 50% glycerol.

Applications

Recommended Dilution

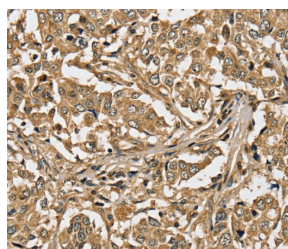
WB	1:1000-1:5000
IHC	1:100-1:300

Data

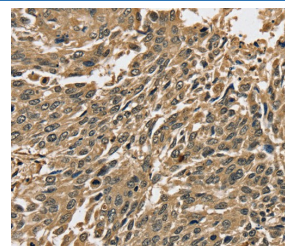


Western Blot analysis of Jurkat, 293T and HeLa cell, Mouse brain tissue and K562 cell using PPP1CC Polyclonal Antibody at dilution of 1:200

Calculated-MW:37 kDa



Immunohistochemistry of paraffin-embedded Human liver cancer using PPP1CC Polyclonal Antibody at dilution of 1:40



Immunohistochemistry of paraffin-embedded Human lung cancer using PPP1CC Polyclonal Antibody at dilution of 1:40

Preparation & Storage

Storage	Store at -20°C Valid for 12 months. Avoid freeze / thaw cycles.
Shipping	The product is shipped with ice pack, upon receipt, store it immediately at the temperature recommended.

Background

For Research Use Only

The protein encoded by this gene belongs to the protein phosphatase family, PP1 subfamily. PP1 is an ubiquitous serine/threonine phosphatase that regulates many cellular processes, including cell division. It is expressed in mammalian cells as three closely related isoforms, alpha, beta/delta and gamma, which have distinct localization patterns. This gene encodes the gamma isozyme. Alternatively spliced transcript variants encoding different isoforms have been found for this gene.

For Research Use Only