

CCS Polyclonal Antibody

catalog number: E-AB-16871

Note: Centrifuge before opening to ensure complete recovery of vial contents.

Description

| | |
|---------------------|--|
| Reactivity | Human;Mouse;Rat |
| Immunogen | Synthetic peptide of human CCS |
| Host | Rabbit |
| Isotype | IgG |
| Purification | Affinity purification |
| Buffer | Phosphate buffered solution, pH 7.4, containing 0.05% stabilizer and 50% glycerol. |

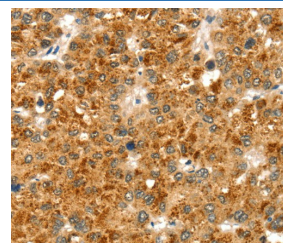
Applications

| Applications | Recommended Dilution |
|--------------|----------------------|
| WB | 1:500-1:2000 |
| IHC | 1:25-1:100 |

Data



Western Blot analysis of Human fetal liver tissue using CCS Polyclonal Antibody at dilution of 1:300
Calculated-MW:29 kDa



Immunohistochemistry of paraffin-embedded Human liver cancer using CCS Polyclonal Antibody at dilution of 1:35

Preparation & Storage

| | |
|-----------------|--|
| Storage | Store at -20°C Valid for 12 months. Avoid freeze / thaw cycles. |
| Shipping | The product is shipped with ice pack, upon receipt, store it immediately at the temperature recommended. |

Background

Copper chaperone for superoxide dismutase specifically delivers Cu to copper/zinc superoxide dismutase and may activate copper/zinc superoxide dismutase through direct insertion of the Cu cofactor.

For Research Use Only