

SLAMF7 Polyclonal Antibody

catalog number: E-AB-68382

Note: Centrifuge before opening to ensure complete recovery of vial contents.

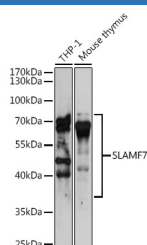
Description

Reactivity	Human;Mouse;Rat
Immunogen	Recombinant fusion protein of human SLAMF7
Host	Rabbit
Isotype	IgG
Purification	Affinity purification
Buffer	Phosphate buffered solution, pH 7.4, containing 0.05% stabilizer and 50% glycerol.

Applications Recommended Dilution

WB	1:500-1:2000
-----------	--------------

Data



Western blot analysis of extracts of various cell lines using SLAMF7 Polyclonal Antibody at 1:3000 dilution.

Observed-MW:25-80 kDa

Calculated-MW:17 kDa/21 kDa/22 kDa/25 kDa/32 kDa/37 kDa

Preparation & Storage

Storage	Store at -20°C Valid for 12 months. Avoid freeze / thaw cycles.
Shipping	The product is shipped with ice pack, upon receipt, store it immediately at the temperature recommended.

Background

SLAM family member 7 (SLAMF7), also known as CRACC, CD319, CD2-like receptor-activating cytotoxic cells, and CS1, is a single-pass type I membrane protein and a member of the CD2 family of cell surface receptors. SLAMF7 is expressed on the surface of NK cells, CD8⁺ T cells, activated B cells, and mature dendritic cells but not in promyelocytic, B-cell lines, or T-cell lines. In human NK cells, activated SLAMF7 transmits signals following association with the adaptor protein EAT-2. In the absence of EAT-2, SLAMF7 potentially inhibited natural killer cell function. It was also inhibitory in T cells, which are typically devoid of EAT-2. Thus, SLAMF7 can exert activating or inhibitory influences on cells of the immune system depending on cellular context and the availability of effector proteins.

For Research Use Only