

TROVE2 Polyclonal Antibody

catalog number: **E-AB-67807**

Note: Centrifuge before opening to ensure complete recovery of vial contents.

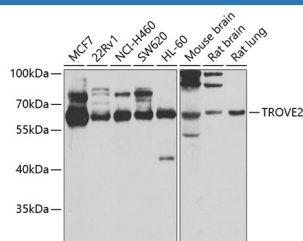
Description

Reactivity	Human;Mouse;Rat
Immunogen	Recombinant fusion protein of human TROVE2
Host	Rabbit
Isotype	IgG
Purification	Affinity purification
Buffer	Phosphate buffered solution, pH 7.4, containing 0.05% stabilizer and 50% glycerol.

Applications

WB	1:500-1:2000
-----------	--------------

Data



Western blot analysis of extracts of various cell lines using TROVE2 Polyclonal Antibody at 1:1000 dilution.

Observed-MW:61 kDa

Calculated-MW:23 kDa/58 kDa/59 kDa/60 kDa

Preparation & Storage

Storage	Store at -20°C Valid for 12 months. Avoid freeze / thaw cycles.
Shipping	The product is shipped with ice pack, upon receipt, store it immediately at the temperature recommended.

Background

RNA-binding protein that binds to misfolded non-coding RNAs, pre-5S rRNA, and several small cytoplasmic RNA molecules known as Y RNAs. May stabilize some of these RNAs and protect them from degradation. Binds to endogenous Alu retroelements which are induced by type I interferon and stimulate porinflammotry cytokine secretion. Regulates the expression of Alu retroelements as well as inflammatory genes.

For Research Use Only