

## GABARAPL2 Polyclonal Antibody

catalog number: E-AB-53021

**Note:** Centrifuge before opening to ensure complete recovery of vial contents.

### Description

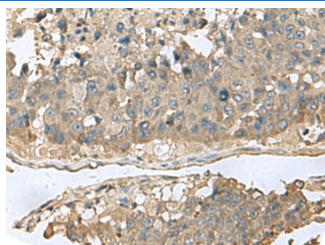
<b>Reactivity</b>	Human;Mouse;Rat
<b>Immunogen</b>	Fusion protein of human GABARAPL2
<b>Host</b>	Rabbit
<b>Isotype</b>	IgG
<b>Purification</b>	Antigen affinity purification
<b>Conjugation</b>	Unconjugated
<b>Buffer</b>	Phosphate buffered solution, pH 7.4, containing 0.05% stabilizer and 50% glycerol.

### Applications

### Recommended Dilution

<b>IHC</b>	1:50-1:300
------------	------------

### Data



Immunohistochemistry of paraffin-embedded Human liver cancer tissue using GABARAPL2 Polyclonal Antibody at dilution of 1:60(×200)

### Preparation & Storage

<b>Storage</b>	Store at -20°C Valid for 12 months. Avoid freeze / thaw cycles.
<b>Shipping</b>	The product is shipped with ice pack, upon receipt, store it immediately at the temperature recommended.

### Background

GABARAPL2 (GABA Type A Receptor Associated Protein Like 2) is a Protein Coding gene. Diseases associated with GABARAPL2 include Amyotrophic Lateral Sclerosis Type 14 and Neuronal Ceroid Lipofuscinosis. Among its related pathways are Mitophagy - animal and Vesicle-mediated transport. GO annotations related to this gene include microtubule binding and SNARE binding. An important paralog of this gene is GABARAPL1.