

PCGF1 Polyclonal Antibody

catalog number: E-AB-67746

Note: Centrifuge before opening to ensure complete recovery of vial contents.

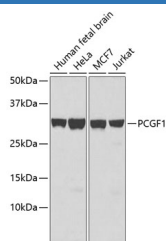
Description

Reactivity	Human;Mouse
Immunogen	Recombinant fusion protein of human PCGF1 (NP_116062.2).
Host	Rabbit
Isotype	IgG
Purification	Affinity purification
Buffer	Phosphate buffered solution, pH 7.4, containing 0.05% stabilizer and 50% glycerol.

Applications

Applications	Recommended Dilution
WB	1:500-1:2000
IF	1:50-1:200

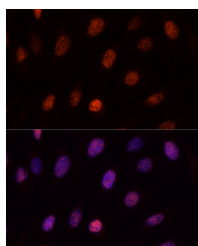
Data



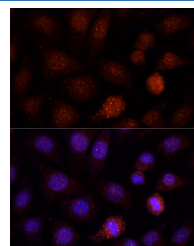
Western blot analysis of extracts of various cell lines using PCGF1 Polyclonal Antibody.

Observed-MW:30 kDa

Calculated-MW:20 kDa/30 kDa



Immunofluorescence analysis of U-2OS cells using PCGF1 Polyclonal Antibody at dilution of 1:100. Blue: DAPI for nuclear staining.



Immunofluorescence analysis of L-929 cells using PCGF1 Polyclonal Antibody at dilution of 1:100. Blue: DAPI for nuclear staining.

Preparation & Storage

Storage	Store at -20°C Valid for 12 months. Avoid freeze / thaw cycles.
Shipping	The product is shipped with ice pack, upon receipt, store it immediately at the temperature recommended.

Background

For Research Use Only

PCGF1 (Polycomb Group Ring Finger 1) is a Protein Coding gene. Diseases associated with PCGF1 include Bardet-Biedl Syndrome 2 and Kidney Clear Cell Sarcoma. Among its related pathways are Signaling pathways regulating pluripotency of stem cells. Gene Ontology (GO) annotations related to this gene include protein C-terminus binding. An important paralog of this gene is PCGF6.

For Research Use Only

Toll-free: 1-888-852-8623
Web: www.elabscience.com

Tel: 1-832-243-6086
Email: techsupport@elabscience.com

Fax: 1-832-243-6017

Rev. V1.7