

Recombinant AFP/alpha-fetoprotein Monoclonal Antibody

catalog number: **AN300030P**

Note: Centrifuge before opening to ensure complete recovery of vial contents.

Description

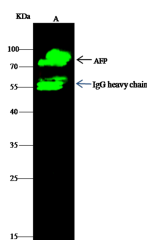
Reactivity	Human
Immunogen	Recombinant Human AFP / alpha-fetoprotein protein
Host	Rabbit
Isotype	IgG
Clone	8D2
Purification	Protein A
Buffer	0.2 µm filtered solution in PBS

Applications

Recommended Dilution

WB	1:500-1:2000
IP	0.5-2 µL/mg of lysate

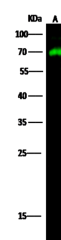
Data



Immunoprecipitation analysis using 2 µL anti-AFP Monoclonal Antibody and 60 µg of Immunomagnetic beads Protein G. Western blot was performed from the immunoprecipitate using AFP Monoclonal Antibody at a dilution of 1:100. Lane A: 0.5 mg HepG2 Whole Cell Lysate

Observed-MW: 68 kDa

Calculated-MW: 68 kDa



Western Blot with AFP / alpha-fetoprotein Monoclonal Antibody at dilution of 1:500. Lane A: HepG2 Whole Cell Lysate, Lysates/proteins at 30 µg per lane.

Observed-MW: 68 kDa

Calculated-MW: 68 kDa

Preparation & Storage

Storage	This antibody can be stored at 2°C-8°C for one month without detectable loss of activity. Antibody products are stable for twelve months from date of receipt when stored at -20°C to -80°C. Preservative-Free. Avoid repeated freeze-thaw cycles.
Shipping	Ice bag

Background

This gene encodes alpha-fetoprotein, a major plasma protein produced by the yolk sac and the liver during fetal life. Alpha-fetoprotein expression in adults is often associated with hepatoma or teratoma. However, hereditary persistence of alpha-fetoprotein may also be found in individuals with no obvious pathology. The protein is thought to be the fetal counterpart of serum albumin, and the alpha-fetoprotein and albumin genes are present in tandem in the same transcriptional orientation on chromosome 4. Alpha-fetoprotein is found in monomeric as well as dimeric and trimeric forms, and binds copper, nickel, fatty acids and bilirubin. The level of alpha-fetoprotein in amniotic fluid is used to measure renal loss of protein to screen for spina bifida and anencephaly.

For Research Use Only