

Recombinant Human CUTA Protein (His Tag)

Catalog Number: PKSH032954

Note: *Centrifuge before opening to ensure complete recovery of vial contents.*

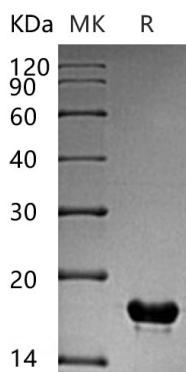
Description

Species	Human
Source	E.coli-derived Human CUTA protein Met 1-Pro156, with an C-terminal His
Calculated MW	17.9 kDa
Observed MW	17 kDa
Accession	O60888
Bio-activity	Not validated for activity

Properties

Purity	> 95 % as determined by reducing SDS-PAGE.
Endotoxin	< 1.0 EU per µg of the protein as determined by the LAL method.
Storage	Generally, lyophilized proteins are stable for up to 12 months when stored at -20 to -80°C. Reconstituted protein solution can be stored at 4-8°C for 2-7 days. Aliquots of reconstituted samples are stable at < -20°C for 3 months.
Shipping	This product is provided as lyophilized powder which is shipped with ice packs.
Formulation	Lyophilized from a 0.2 µm filtered solution of 20mM Tris-HCl, 1mM DTT, pH 8.0. Normally 5% - 8% trehalose, mannitol and 0.01% Tween 80 are added as protectants before lyophilization.
Reconstitution	Please refer to the specific buffer information in the printed manual. Please refer to the printed manual for detailed information.

Data



> 95 % as determined by reducing SDS-PAGE.

Background

Protein CutA (CUTA) possesses a signal peptide and is widely expressed in brain. CUTA may form part of a complex of membrane proteins attached to acetylcholinesterase (AChE). CUTA takes part in cellular tolerance to a broad range of divalent cations other than copper. Alternate transcriptional splice variants, both protein-coding and non-protein-coding, have been found.

For Research Use Only

Toll-free: 1-888-852-8623
Web: www.elabscience.com

Tel: 1-832-243-6086
Email: techsupport@elabscience.com

Fax: 1-832-243-6017