

## Recombinant Human CPVL/VCP-Like Protein (His Tag)

**Catalog Number:** PKSH032931

**Note:** Centrifuge before opening to ensure complete recovery of vial contents.

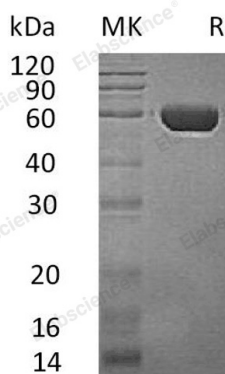
### Description

<b>Species</b>	Human
<b>Source</b>	HEK293 Cells-derived Human CPVL;VCP-Like protein Leu23-Gly476, with an C-terminal His
<b>Calculated MW</b>	52.9 kDa
<b>Observed MW</b>	54-65 kDa
<b>Accession</b>	AAH16838.1
<b>Bio-activity</b>	Not validated for activity

### Properties

<b>Purity</b>	> 95 % as determined by reducing SDS-PAGE.
<b>Concentration</b>	Subject to label value.
<b>Endotoxin</b>	< 1.0 EU per µg of the protein as determined by the LAL method.
<b>Storage</b>	Store at < -20°C, stable for 6 months. Please minimize freeze-thaw cycles.
<b>Shipping</b>	This product is provided as liquid. It is shipped at frozen temperature with blue ice/gel packs. Upon receipt, store it immediately at < - 20°C.
<b>Formulation</b>	Supplied as a 0.2 µm filtered solution of 20mM Tris-HCl, 150mM NaCl, 10% Glycerol, pH 7.5.

### Data



> 95 % as determined by reducing SDS-PAGE.

### Background

Probable serine carboxypeptidase CPVL, also known as Carboxypeptidase, vitellogenic-like, Vitellogenic carboxypeptidase-like protein, is a member of the peptidase S10 family. It is expressed in macrophages but not in other leukocytes. And specifically, it is abundantly expressed in heart and kidney, also expressed in spleen, leukocytes, and placenta. This enzyme may be involved in the digestion of phagocytosed particles in the lysosome, and also participation in an inflammatory protease cascade, and trimming of peptides for antigen presentation.

### For Research Use Only