

Phospho-EEF2 (Thr56) Polyclonal Antibody

catalog number: **E-AB-51049**

Note: Centrifuge before opening to ensure complete recovery of vial contents.

Description

Reactivity	Human;Mouse;Rat
Immunogen	Synthesized phospho derived from human eEF2 (Phospho-Thr56)
Host	Rabbit
Isotype	IgG
Purification	Affinity purification
Buffer	Phosphate buffered solution, pH 7.4, containing 0.05% stabilizer, 0.5% protein protectant and 50% glycerol.

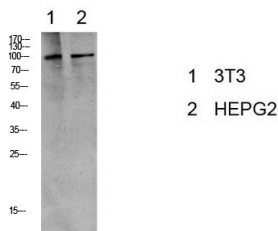
Applications

WB

Recommended Dilution

1:500-2000

Data



Western Blot analysis of 3T3, HepG2 cells using Phospho-eEF2 (Thr56) Polyclonal Antibody at dilution of 1:1000.

Observed-MW:100 kDa

Preparation & Storage

Storage	Store at -20°C Valid for 12 months. Avoid freeze / thaw cycles.
Shipping	The product is shipped with ice pack, upon receipt, store it immediately at the temperature recommended.

Background

This gene encodes a member of the GTP-binding translation elongation factor family. This protein is an essential factor for protein synthesis. It promotes the GTP-dependent translocation of the nascent protein chain from the A-site to the P-site of the ribosome. This protein is completely inactivated by EF-2 kinase phosphorylation.

For Research Use Only