

RC3H1 Polyclonal Antibody

catalog number: **E-AB-91210**

Note: Centrifuge before opening to ensure complete recovery of vial contents.

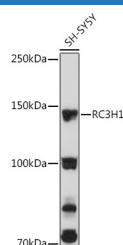
Description

Reactivity	Human;Mouse;Rat
Immunogen	Recombinant fusion protein of human RC3H1
Host	Rabbit
Isotype	IgG
Purification	Affinity purification
Buffer	Phosphate buffered solution, pH 7.4, containing 0.05% stabilizer and 50% glycerol.

Applications Recommended Dilution

WB	1:200-1:2000
-----------	--------------

Data



Western blot analysis of extracts of SH-SY5Y cells using RC3H1 Polyclonal Antibody at 1:3000 dilution.

Observed-MW:126 kDa

Calculated-MW:124 kDa/125 kDa

Preparation & Storage

Storage	Store at -20°C Valid for 12 months. Avoid freeze / thaw cycles.
Shipping	The product is shipped with ice pack, upon receipt, store it immediately at the temperature recommended.

Background

This gene encodes a protein containing RING-type and C3H1-type zinc finger motifs. The encoded protein recognizes and binds to a constitutive decay element (CDE) in the 3' UTR of mRNAs, leading to mRNA deadenylation and degradation. Alternative splicing results in multiple transcript variants.

For Research Use Only