

Recombinant c-Jun Monoclonal Antibody

catalog number: **AN300887L**

Note: Centrifuge before opening to ensure complete recovery of vial contents.

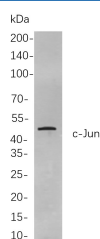
Description

Reactivity	Human;Mouse;Rat
Immunogen	Recombinant Human c-Jun protein
Host	Rabbit
Isotype	IgG,k
Clone	B834
Purification	Protein A
Buffer	PBS, 50% glycerol, 0.05% Proclin 300, 0.05% protein protectant.

Applications

Applications	Recommended Dilution
IHC	1:200-1:1000
WB	1:2000-1:10000
IF	1:200-1:1000
ELISA	1:5000-1:20000
IP	1:50-1:200

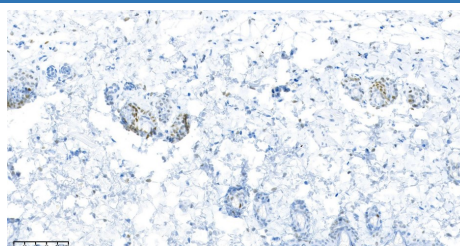
Data



Western Blot with Recombinant c-Jun Monoclonal Antibody at dilution of 1:1000 dilution. Lane A: PC-12 cells.

Observed-MW:43 kDa

Calculated-MW:36 kDa



Immunohistochemistry of paraffin-embedded rat skin using Recombinant c-Jun Monoclonal Antibody at dilution of 1:200.

Preparation & Storage

Storage	Store at -20°C Valid for 12 months. Avoid freeze / thaw cycles.
Shipping	Ice bag

Background

Transcription factor that recognizes and binds to The enhancer heptamer motif 5'-TGA[CG]TCA-3'. PTM: Phosphorylation enhances The transcriptional activity. Phosphorylated by PRKDC., similarity: Belongs to The bZIP family., similarity: Belongs to The bZIP family. Jun subfamily., similarity: Contains 1 bZIP domain., subunit: Heterodimer with either FOS or BATF3. Interacts with HIVP3 (By similarity). Interacts with SMAD3/SMAD4 heterodimers. Interacts with MYBBP1A, SPIB and TCF20. Interacts with COPS5; indirectly leading to its phosphorylation. Interacts with DSIPI; this interaction inhibits The binding of active AP1 to its target DNA.

For Research Use Only

Toll-free: 1-888-852-8623
Web: www.elabscience.com

Tel: 1-832-243-6086
Email: techsupport@elabscience.com

Fax: 1-832-243-6017

Rev. V1.2