

ISM2 Polyclonal Antibody

catalog number: E-AB-17451

Note: Centrifuge before opening to ensure complete recovery of vial contents.

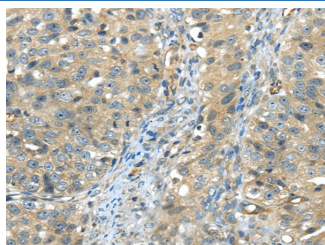
Description

Reactivity	Human
Immunogen	Synthetic peptide of human ISM2
Host	Rabbit
Isotype	IgG
Purification	Affinity purification
Buffer	Phosphate buffered solution, pH 7.4, containing 0.05% stabilizer and 50% glycerol.

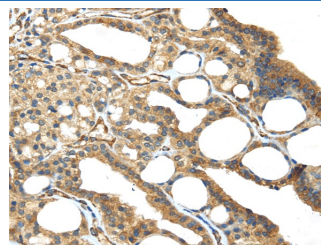
Applications Recommended Dilution

IHC	1:30-150
------------	----------

Data



Immunohistochemistry of paraffin-embedded Human breast cancer using ISM2 Polyclonal Antibody at dilution of 1/45



Immunohistochemistry of paraffin-embedded Human thyroid cancer using ISM2 Polyclonal Antibody at dilution of 1/45

Preparation & Storage

Storage	Store at -20°C Valid for 12 months. Avoid freeze / thaw cycles.
Shipping	The product is shipped with ice pack, upon receipt, store it immediately at the temperature recommended.

Background

The protein encoded by this gene contains a type 1 thrombospondin domain, which is present in thrombospondin, a number of proteins involved in the complement pathway, as well as in extracellular matrix proteins. Two alternatively spliced transcript variants encoding distinct isoforms have been observed.

For Research Use Only