

## LRPPRC Polyclonal Antibody

**catalog number:** E-AB-62333

**Note:** Centrifuge before opening to ensure complete recovery of vial contents.

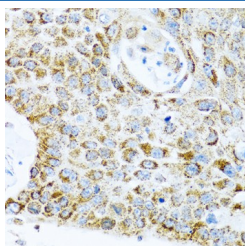
### Description

<b>Reactivity</b>	Human;Mouse;Rat
<b>Immunogen</b>	Recombinant fusion protein of human LRPPRC (NP_573566.2).
<b>Host</b>	Rabbit
<b>Isotype</b>	IgG
<b>Purification</b>	Affinity purification
<b>Buffer</b>	Phosphate buffered solution, pH 7.4, containing 0.05% stabilizer and 50% glycerol.

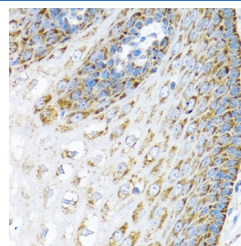
### Applications Recommended Dilution

<b>IHC</b>	1:100-1:200
<b>IF</b>	1:100-1:200

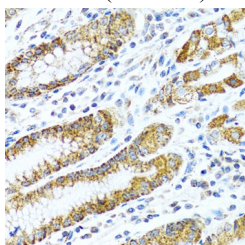
### Data



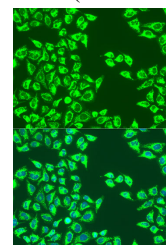
Immunohistochemistry of paraffin-embedded Human lung cancer using LRPPRC Polyclonal Antibody at dilution of 1:100 (40x lens).



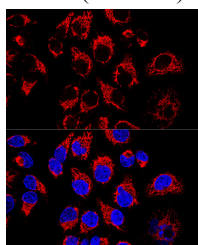
Immunohistochemistry of paraffin-embedded Human esophagus using LRPPRC Polyclonal Antibody at dilution of 1:100 (40x lens).



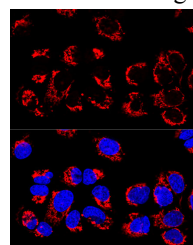
Immunohistochemistry of paraffin-embedded Human stomach using LRPPRC Polyclonal Antibody at dilution of 1:100 (40x lens).



Immunofluorescence analysis of U2OS cells using LRPPRC Polyclonal Antibody at dilution of 1:100. Blue: DAPI for nuclear staining.

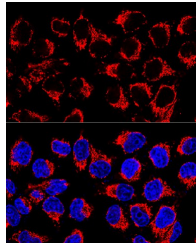


Confocal immunofluorescence analysis of HeLa cells using LRPPRC Polyclonal Antibody at dilution of 1:400. Blue: DAPI for nuclear staining.

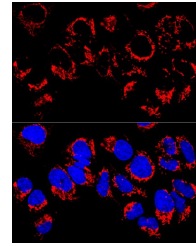


Confocal immunofluorescence analysis of U-2 OS cells using LRPPRC Polyclonal Antibody at dilution of 1:400. Blue: DAPI for nuclear staining.

### For Research Use Only



Confocal immunofluorescence analysis of HeLa cells using LRPPRC Polyclonal Antibody at dilution of 1:400. Blue: DAPI for nuclear staining.



Confocal immunofluorescence analysis of U2OS cells using LRPPRC Polyclonal Antibody at dilution of 1:400. Blue: DAPI for nuclear staining.

## Preparation & Storage

### Storage

Store at -20°C Valid for 12 months. Avoid freeze / thaw cycles.

### Shipping

The product is shipped with ice pack, upon receipt, store it immediately at the temperature recommended.

## Background

This gene encodes a leucine-rich protein that has multiple pentatricopeptide repeats (PPR). The precise role of this protein is unknown but studies suggest it may play a role in cytoskeletal organization, vesicular transport, or in transcriptional regulation of both nuclear and mitochondrial genes. The protein localizes primarily to mitochondria and is predicted to have an N-terminal mitochondrial targeting sequence. Mutations in this gene are associated with the French-Canadian type of Leigh syndrome.

## For Research Use Only