

# Recombinant Human STAR Protein(Sumo Tag)

Catalog Number: PDEH100498



**Note:** Centrifuge before opening to ensure complete recovery of vial contents.

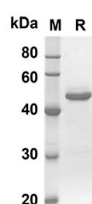
## Description

<b>Species</b>	Human
<b>Source</b>	E.coli-derived Human STAR protein Met1-Cys285, with an N-terminal Sumo
<b>Mol_Mass</b>	44.2 kDa
<b>Accession</b>	P49675
<b>Bio-activity</b>	Not validated for activity

## Properties

<b>Purity</b>	> 90% as determined by reducing SDS-PAGE.
<b>Endotoxin</b>	< 10 EU/mg of the protein as determined by the LAL method
<b>Storage</b>	Generally, lyophilized proteins are stable for up to 12 months when stored at -20 to -80 °C. Reconstituted protein solution can be stored at 4-8°C for 2-7 days. Aliquots of reconstituted samples are stable at < -20°C for 3 months.
<b>Shipping</b>	This product is provided as lyophilized powder which is shipped with ice packs.
<b>Formulation</b>	Lyophilized from a 0.2 µm filtered solution in PBS with 5% Trehalose and 5% Mannitol.
<b>Reconstitution</b>	It is recommended that sterile water be added to the vial to prepare a stock solution of 0.5 mg/mL. Concentration is measured by UV-Vis.

## Data



SDS-PAGE analysis of Human STAR proteins, 2 µg/lane of Recombinant Human STAR proteins was resolved with SDS-PAGE under reducing conditions, showing bands at 44.2 KD

## Background

The protein encoded by this gene plays a key role in the acute regulation of steroid hormone synthesis by enhancing the conversion of cholesterol into pregnenolone. This protein permits the cleavage of cholesterol into pregnenolone by mediating the transport of cholesterol from the outer mitochondrial membrane to the inner mitochondrial membrane. Mutations in this gene are a cause of congenital lipoid adrenal hyperplasia (CLAH), also called lipoid CAH. A pseudogene of this gene is located on chromosome 13.

## For Research Use Only

A Reliable Research Partner in Life Science and Medicine  
Tel:400-999-2100

Email:[techsupport@elabscience.cn](mailto:techsupport@elabscience.cn)

Web:[www.elabscience.cn](http://www.elabscience.cn)

Rev. V1.6