

Purified Anti-Human CD35 Antibody[E11]

Catalog Number: GF1062A

Note: Centrifuge before opening to ensure complete recovery of vial contents.

Description

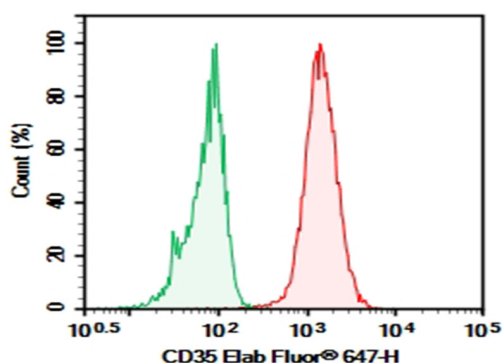
Reactivity	Human
Immunogen	Recombinant Human CD35 protein
Host	Mouse
Isotype	Mouse IgG1, κ
Clone	E11
Purification	>98%, Protein A/G purified
Conjugation	Unconjugated
Buffer	PBS, pH 7.2. Contains 0.05% proclin 300.

Applications

Recommended Dilution

FCM	2 µg/mL (0.5×10 ⁶ -1×10 ⁶ cells)
------------	--

Data



Human peripheral blood granulocytes cell were stained with 0.2 µg Purified Anti-Human CD35 Antibody[E11] (Right) and 0.2 µg Mouse IgG1, κ Isotype Control (Left), followed by Elab Fluor® 647-conjugated Goat Anti-Mouse IgG Secondary Antibody.

Preparation & Storage

Storage	Store at 4°C valid for 12 months or -20°C valid for long term storage, avoid freeze / thaw cycles.
Shipping	Ice bag

Background

CD35, also known as complement receptor 1 (CR1), is a 220-300 kDa N-glycosylated member of the RCA (regulators of complement activation) family of proteins. CD35 binds and internalizes particles and immune complexes that are opsonized with MBL or complement components C3b, C3i, C4b, or C1q. CD35 additionally protects the cell from complement-mediated lysis by serving as a cofactor for Factor I and inhibiting the C3 and C5 convertases. The extracellular domain (ECD) of human CD35 contains 30 tandem SCR/SUSHI repeats.