

MORF4L1 Polyclonal Antibody

catalog number: E-AB-19411

Note: Centrifuge before opening to ensure complete recovery of vial contents.

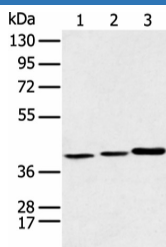
Description

Reactivity	Human;Mouse;Rat
Immunogen	Synthetic peptide of human MORF4L1
Host	Rabbit
Isotype	IgG
Purification	Antigen affinity purification
Buffer	Phosphate buffered solution, pH 7.4, containing 0.05% stabilizer and 50% glycerol.

Applications Recommended Dilution

WB	1:500-1:2000
IHC	1:25-1:100

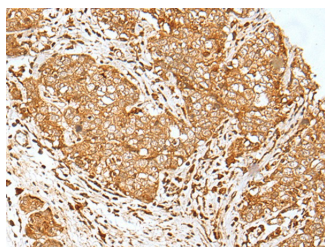
Data



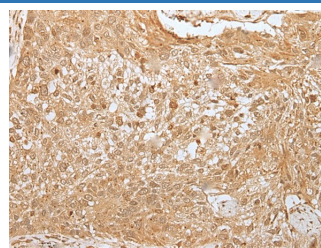
Western blot analysis of Human fetal liver tissue Hela cell and Human fetal brain tissue using MORF4L1 Polyclonal Antibody at dilution of 1:350

Observed-MV:Refer to figures

Calculated-MV:41 kDa



Immunohistochemistry of paraffin-embedded Human esophagus cancer tissue using MORF4L1 Polyclonal Antibody at dilution of 1:30(×200)



Immunohistochemistry of paraffin-embedded Human lung cancer tissue using MORF4L1 Polyclonal Antibody at dilution of 1:30(×200)

Preparation & Storage

Storage	Store at -20°C Valid for 12 months. Avoid freeze / thaw cycles.
Shipping	The product is shipped with ice pack,upon receipt,store it immediately at the temperature recommended.

Background

For Research Use Only

MORF4L1 (also known as MRG15) and MORF4-related gene X (MRGX). The human MORF4 gene maps to chromosome 4q33-q34.1. MORF4 induces a senescent-like phenotype in complementation group B immortal cell lines. The genes encoding MRG15 and MRGX map to chromosomes 15q24 and Xq22, respectively. MORF4, MORF4L1 and MRGX each contain a C-terminal leucine zipper. An association between MORF4L1, Rb (retinoblastoma tumor suppressor) and PAM14 (protein associated with MORF4L1) suggests a role for MORF4L1 in transcription regulation.

For Research Use Only

Toll-free: 1-888-852-8623
Web: www.elabscience.com

Tel: 1-832-243-6086
Email: techsupport@elabscience.com

Fax: 1-832-243-6017

Rev. V1.6