

Histone H3 Polyclonal Antibody

catalog number: **E-AB-40520**

Note: Centrifuge before opening to ensure complete recovery of vial contents.

Description

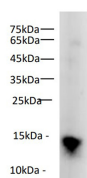
Reactivity	Human;Mouse;Rat
Immunogen	Synthetic peptide derived from N-terminus of human Histone H3 protein conjugated to keyhole limpet haemocyanin.
Host	Rabbit
Isotype	IgG
Purification	Antigen Affinity Purification
Buffer	PBS with 0.05% proclin 300, 1% protective protein and 50% glycerol,pH7.4

Applications

Recommended Dilution

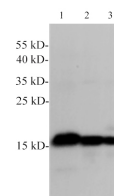
WB	1:5000-10000
-----------	--------------

Data



Western blot of Mouse spleen lysates with anti-Histone H3 pAb at dilution of 1:1000.

Observed-MW:15 kDa
Calculated-MW:15 kDa



Western Blotting with anti-Histone H3 polyclonal antibody at dilution of 1:5000. Lane 1:HT-29 cell lysates, Lane 2: NIH/3T3 cell lysates, Lane 3: C6

Observed-MW:15 kDa
Calculated-MW:15 kDa

Preparation & Storage

Storage	Store at -20°C Valid for 12 months. Avoid freeze / thaw cycles.
Shipping	The product is shipped with ice pack,upon receipt,store it immediately at the temperature recommended.

Background

Histone H3 is one of the DNA-binding proteins found in the chromatin of all eukaryotic cells. H3 along with four core histone proteins binds to DNA forming the structure of the nucleosome. This antibody is not cross-reactive with other histones.

For Research Use Only