

SLC38A3 Polyclonal Antibody

catalog number: E-AB-67618

Note: Centrifuge before opening to ensure complete recovery of vial contents.

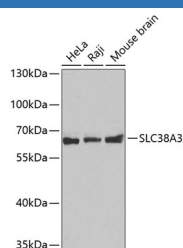
Description

Reactivity	Human;Mouse;Rat
Immunogen	Recombinant fusion protein of human SLC38A3 (NP_006832.1).
Host	Rabbit
Isotype	IgG
Purification	Affinity purification
Buffer	Phosphate buffered solution, pH 7.4, containing 0.05% stabilizer and 50% glycerol.

Applications

WB	1:500-1:2000
-----------	--------------

Data



Western blot analysis of extracts of various cell lines using SLC38A3 Polyclonal Antibody.

Observed-MV:60 kDa

Calculated-MV:55 kDa

Preparation & Storage

Storage	Store at -20°C Valid for 12 months. Avoid freeze / thaw cycles.
Shipping	The product is shipped with ice pack, upon receipt, store it immediately at the temperature recommended.

Background

SLC38A3 (Solute Carrier Family 38 Member 3) is a Protein Coding gene. Diseases associated with SLC38A3 include Dissociative Disorder and Sarcocystosis. Among its related pathways are Transport of glucose and other sugars, bile salts and organic acids, metal ions and amine compounds and Circadian entrainment. Gene Ontology (GO) annotations related to this gene include symporter activity and L-alanine transmembrane transporter activity. An important paralog of this gene is SLC38A5.

For Research Use Only