

SKI Polyclonal Antibody

catalog number: E-AB-19278

Note: Centrifuge before opening to ensure complete recovery of vial contents.

Description

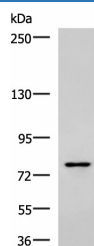
Reactivity	Human;Mouse
Immunogen	Synthetic peptide of human SKI
Host	Rabbit
Isotype	IgG
Purification	Antigen affinity purification
Conjugation	Unconjugated
Buffer	Phosphate buffered solution, pH 7.4, containing 0.05% stabilizer and 50% glycerol.

Applications

Recommended Dilution

WB	1:500-1:2000
IHC	1:50-1:200

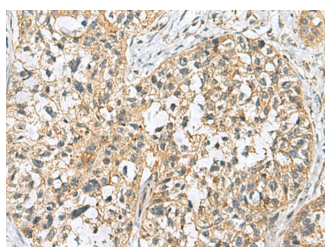
Data



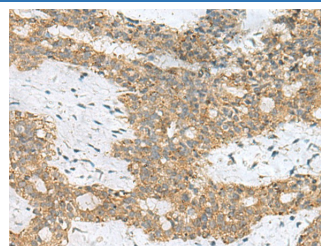
Western blot analysis of Raji cell lysate using SKI Polyclonal Antibody at dilution of 1:800

Observed-MW:Refer to figures

Calculated-MW:80 kDa



Immunohistochemistry of paraffin-embedded Human esophagus cancer tissue using SKI Polyclonal Antibody at dilution of 1:70(×200)



Immunohistochemistry of paraffin-embedded Human breast cancer tissue using SKI Polyclonal Antibody at dilution of 1:70(×200)

Preparation & Storage

Storage	Store at -20°C Valid for 12 months. Avoid freeze / thaw cycles.
Shipping	The product is shipped with ice pack, upon receipt, store it immediately at the temperature recommended.

Background

This gene encodes the nuclear protooncogene protein homolog of avian sarcoma viral (v-ski) oncogene. It functions as a repressor of TGF-beta signaling, and may play a role in neural tube development and muscle differentiation.

For Research Use Only