

Recombinant Human CX3CL1/Fractalkine Protein (His Tag)



Catalog Number: PKSH032289

Note: Centrifuge before opening to ensure complete recovery of vial contents.

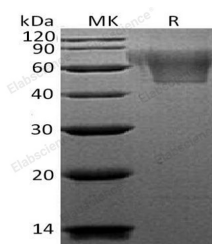
Description

Synonyms	Fractalkine; C-X3-C Motif Chemokine 1; CX3C Membrane-Anchored Chemokine; Neurotactin; Small-Inducible Cytokine D1; CX3CL1; FKN; NTT; SCYD1
Species	Human
Expression Host	HEK293 Cells
Sequence	Gln25-Arg339
Accession	P78423
Calculated Molecular Weight	34.4 kDa
Observed molecular weight	50-90 kDa
Tag	C-His

Properties

Purity	> 95 % as determined by reducing SDS-PAGE.
Endotoxin	< 1.0 EU per µg of the protein as determined by the LAL method.
Storage	Generally, lyophilized proteins are stable for up to 12 months when stored at -20 to -80°C. Reconstituted protein solution can be stored at 4-8°C for 2-7 days. Aliquots of reconstituted samples are stable at < -20°C for 3 months.
Shipping	This product is provided as lyophilized powder which is shipped with ice packs.
Formulation	Lyophilized from a 0.2 µm filtered solution of 20mM PB, 150mM NaCl, pH 7.2. Normally 5 % - 8 % trehalose, mannitol and 0.01% Tween80 are added as protectants before lyophilization. Please refer to the specific buffer information in the printed manual
Reconstitution	Please refer to the printed manual for detailed information.

Data



> 95 % as determined by reducing SDS-PAGE.

Background

Human Fractalkine (CX3CL1) is a member of the CX3C family of chemokines. Human Fractalkine contains both chemokine and mucin domain. The soluble form of Fractalkine is chemotactic for T-cells and monocytes, but not for neutrophils. The membrane bound form of Fractalkine promotes leukocytes adhesion to endothelial cells. Fractalkine regulates leukocyte adhesion and migration processes at the endothelium and binds to CX3CR1. Natural Human Fractalkine is produced as a long protein (373-amino acid). The mucin-like stalk permits it to bind to the cell surface.

For Research Use Only

A Reliable Research Partner in Life Science and Medicine

Toll-free: 1-888-852-8623

Web: www.elabscience.com

Tel: 1-832-243-6086

Email: techsupport@elabscience.com

Fax: 1-832-243-6017