

# SLC17A6 Polyclonal Antibody

catalog number: E-AB-53200

**Note:** Centrifuge before opening to ensure complete recovery of vial contents.

## Description

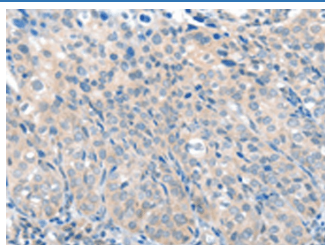
<b>Reactivity</b>	Human;Mouse;Rat
<b>Immunogen</b>	Synthetic peptide of human SLC17A6
<b>Host</b>	Rabbit
<b>Isotype</b>	IgG
<b>Purification</b>	Antigen affinity purification
<b>Conjugation</b>	Unconjugated
<b>buffer</b>	Phosphate buffered solution, pH 7.4, containing 0.05% stabilizer and 50% glycerol.

## Applications

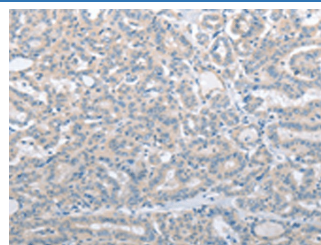
## Recommended Dilution

<b>IHC</b>	1:50-1:200
------------	------------

## Data



Immunohistochemistry of paraffin-embedded Human cervical cancer tissue using SLC17A6 Polyclonal Antibody at dilution of 1:100(×200)



Immunohistochemistry of paraffin-embedded Human thyroid cancer tissue using SLC17A6 Polyclonal Antibody at dilution of 1:100(×200)

## Preparation & Storage

<b>Storage</b>	Store at -20°C Valid for 12 months. Avoid freeze / thaw cycles.
<b>Shipping</b>	The product is shipped with ice pack,upon receipt,store it immediately at the temperature recommended.

## Background

SLC17A6 (Solute Carrier Family 17 Member 6) is a Protein Coding gene. Diseases associated with SLC17A6 include Gnathodiaphyseal Dysplasia and Tendinosis. Among its related pathways are Circadian entrainment and GABAergic synapse. Gene Ontology (GO) annotations related to this gene include symporter activity and L-glutamate transmembrane transporter activity. An important paralog of this gene is SLC17A7.

## For Research Use Only