

# PAX5 Polyclonal Antibody

Catalog Number: E-AB-19303



**Note:** Centrifuge before opening to ensure complete recovery of vial contents.

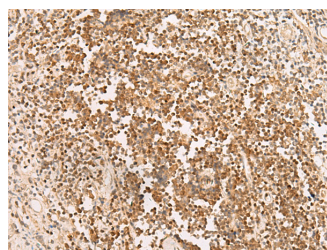
## Description

<b>Reactivity</b>	Human, Mouse
<b>Immunogen</b>	Synthetic peptide of human PAX5
<b>Host</b>	Rabbit
<b>Isotype</b>	IgG
<b>Purification</b>	Antigen affinity purification
<b>Conjugation</b>	Unconjugated
<b>Formulation</b>	PBS with 0.05% NaN <sub>3</sub> and 40% Glycerol, pH7.4

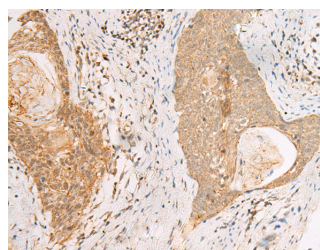
## Applications Recommended Dilution

<b>IHC</b>	1:30-1:150
<b>ELISA</b>	1:5000-1:10000

## Data



Immunohistochemistry of paraffin-embedded Human prostate cancer tissue using PAX5 Polyclonal Antibody at dilution of 1:30(×200)



Immunohistochemistry of paraffin-embedded Human esophagus cancer tissue using PAX5 Polyclonal Antibody at dilution of 1:30(×200)

## Preparation & Storage

**Storage** Store at -20°C. Avoid freeze / thaw cycles.

## Background

PAX5, also named B-cell specific activator protein (BSAP), is a member of the highly conserved paired box (PAX)-domain family of transcription factors. PAX5 is essential in normal B-cell lymphopoiesis. It is expressed in pro-B, pre-B and mature B lymphocytes but not in plasma cells. PAX5 is a common target in leukemogenesis of B-ALL (B-lineage acute lymphoblastic leukemia) along with CDKN2A. Owing to its frequent deletion in B-ALL, PAX5 could be used as one of the molecular markers in diagnosis and monitoring of the disease. This antibody is specific to PAX5. It will not cross react with other PAX members.

## For Research Use Only

A Reliable Research Partner in Life Science and Medicine

Toll-free: 1-888-852-8623

Web: [www.elabscience.com](http://www.elabscience.com)

Tel: 1-832-243-6086

Email: [techsupport@elabscience.com](mailto:techsupport@elabscience.com)

Fax: 1-832-243-6017