

Recombinant Human CRELD1 Protein (His Tag)

Catalog Number:PKSH030636



Note: Centrifuge before opening to ensure complete recovery of vial contents.

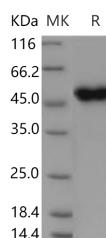
Description

Synonyms	AVSD2;CIRRIN
Species	Human
Expression Host	HEK293 Cells
Sequence	Met 1-Glu362
Accession	NP_001070883.1
Calculated Molecular Weight	37.4 kDa
Observed molecular weight	51 kDa
Tag	C-His

Properties

Purity	> 95 % as determined by reducing SDS-PAGE.
Endotoxin	< 1.0 EU per µg of the protein as determined by the LAL method.
Storage	Generally, lyophilized proteins are stable for up to 12 months when stored at -20 to -80°C. Reconstituted protein solution can be stored at 4-8°C for 2-7 days. Aliquots of reconstituted samples are stable at < -20°C for 3 months.
Shipping	This product is provided as lyophilized powder which is shipped with ice packs.
Formulation	Lyophilized from sterile PBS, pH 7.4 Normally 5 % - 8 % trehalose, mannitol and 0.01 % Tween80 are added as protectants before lyophilization. Please refer to the specific buffer information in the printed manual.
Reconstitution	Please refer to the printed manual for detailed information.

Data



> 95 % as determined by reducing SDS-PAGE.

Background

CRELD1 is a transmembrane glycoprotein. Epidermal growth factor(EGF)like domain exists in CRELD1. EGF-like repeats are a class of cysteine-rich domains that mediate interactions between proteins of diverse function. EGF domains are found in proteins that are either completely secreted or have transmembrane regions that tether the protein to the cell surface. CRELD1 contains a 333 amino acid acid (aa) extracellular domain (ECD), two tandem transmembrane segments, and a second ECD of 15 aa. Defects in CRELD1 may cause susceptibility to atrioventricular septal defect type 2 which results in a persistent common atrioventricular canal.

For Research Use Only

A Reliable Research Partner in Life Science and Medicine

Toll-free: 1-888-852-8623

Web: www.elabscience.com

Tel: 1-832-243-6086

Email: techsupport@elabscience.com

Fax: 1-832-243-6017